



CORONADO®

The Leader in Manufactured Stone, Brick and Tile Products



STONEYARD®

265 Foster Street
Littleton, MA 01460

978.742.9800
sales@stoneyard.com





Industrial Ledge
Shale Grey



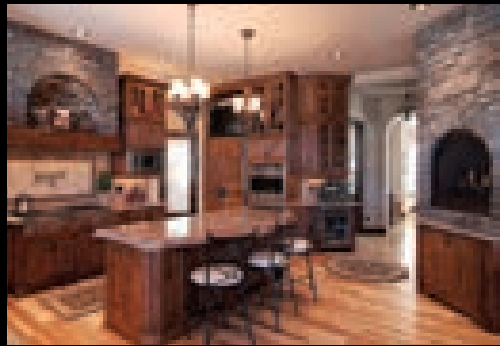
Smooth Limestone
Cream



Barn WoodStone
Rustic Farmhouse



Italian Villa®
Volterra



Weathered Edge
Coal Canyon

NEW PRODUCTS

6" Split Limestone	1 - 2
Prairie Stone	3
Industrial Ledge	4
Milan Ledge & Amalfi Ledge	5
Decorative Band Ideas	6

THE CLASSIC SERIES

8" Classic Jerusalem	9
Smooth Limestone	10
French Limestone	11
Chiseled Limestone	12
Colosseum Travertine	13
Aegean Coral, Caribbean Coral	14
The Getty Stone	15
Sand Canyon Flagstone, Sand Canyon Honed	16

WOODSTONE SERIES

Barn WoodStone, Rough Cut WoodStone, Refined WoodStone	19 - 20
--	---------

THE DESIGNER SERIES

Lennox Stone	23
The Wave	24
Playa Vista Limestone	25
3" Split Limestone	26

CUT STONE SERIES

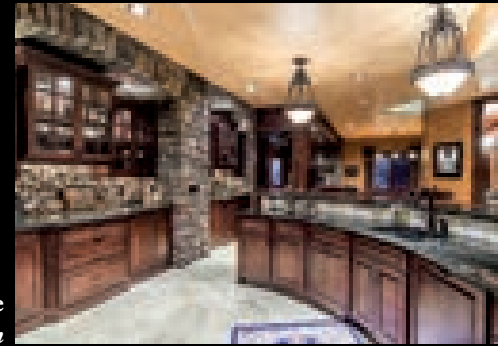
Pavilion Stone	27 - 28
Canyon Cobble & Valley Cobble	29
Osage	30

VILLA STONE SERIES

Venetian Villa®	33 - 34
Italian Villa®	35 - 36
Tuscan Villa®	37 - 38
French Country Villa®	39 - 40

LEDGESTONE SERIES

Old World Ledge	43 - 44
Old Country Ledge	45 - 46
Pro-Ledge®	47 - 48
Coronado Honey Ledge	49 - 50
Quick Stack®	51 - 52
Virginia Ledge	53
Sierra Ledge	54
Eastern Mountain Ledge®	55 - 56
Rocky Mountain Ledge	57
Canyon Ledge	58
Tumbled Ledge	59
Coronado Strip Stone, Mountain Strip Stone	60
Idaho Drystack	61 - 62
Weathered Edge	63 - 64



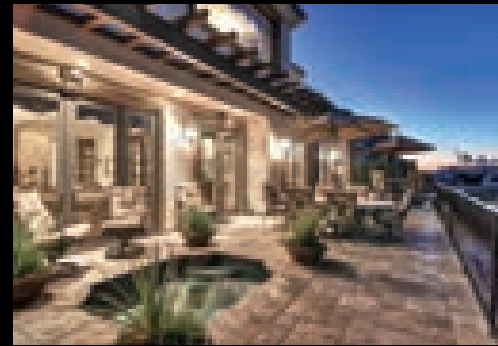
Country Rubble
Aspen



Minnesota Fieldstone
Coastal Brown



Special Used Brick
Rustic Blend



Versailles Travertine
Wheatfield



Flagstone Wall Cap
Lompoc

ASHLAR & RUBBLE SERIES

Country Rubble	67 - 68
Carolina Rubble	69 - 70
English Rubble	71 - 72
Santa Barbara	73 - 74
Country Castle	75 - 76
Belgian Castle	77 - 78

IRREGULAR SHAPED STONE SERIES

Minnesota Fieldstone	81 - 82
Appalachian Fieldstone	83 - 84
Split Fieldstone	85
Viejo Ranch	86
River Rock	87
Creek Rock	88

STONE COMBINATIONS

Stone Combinations	91 - 92
--------------------	---------

THIN BRICK SERIES

Special Used Brick	95 - 97
Clinker Brick	98
Wirecut Brick	99
Sculptured Brick	100
Sicilian Brick	101
Roman Brick	102
Weathered Brick	103
New England Brick	104
Adobe Brick	105 - 106

FLOOR TILE SERIES

Versailles Travertine	109
Jerusalem Cobble	109
Italian Tile	110
Mexican Tile	110
Belgian Tile	111
Random Flagstone Tile	111
River Washed Tile	112
European Cobble	112

TRIM & ACCESSORIES

Moldings, Sills, Lintels & Mantels	115
Window Stones, Trim Stones, Hearthstones & Boxes	116
Quoins, Wall Caps & Post Caps	117
Brick Accessories	118
Grouting Options	119 - 120

TECHNICAL DATA

Coronado Profile Sizes	123
Technical Data	124
Achieving LEED and Green Building Certification	125
Limited Warranty	126
Project Image Credits	127
Nationwide Manufacturing	128



NEW PRODUCTS

Coronado Stone has been the leading innovator in the manufactured stone industry for over fifty years. We have replicated some of the most sought after natural stone varieties in the world and we continue to add new products year after year.

6" Split Limestone - *Cream*



Prairie Stone - Mocha Granite



Industrial Ledge - Shale Grey



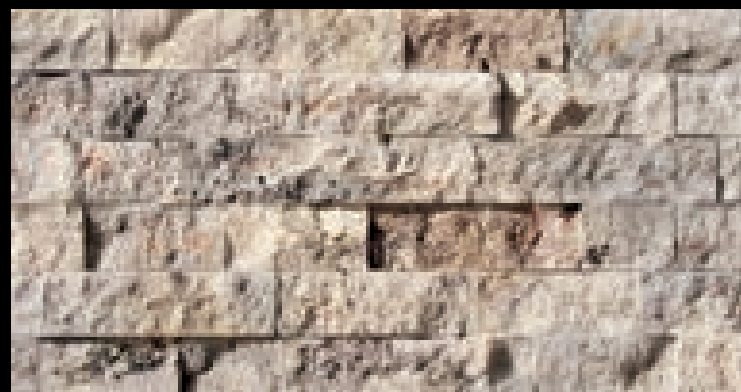
The Getty Stone - Embassy Blend with Amalfi Ledge Band - Granito



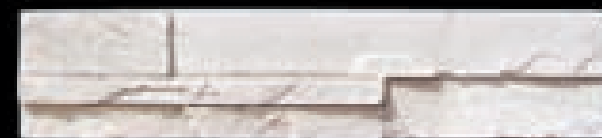
Colosseum Travertine with 6" Chiseled Limestone Band - Roman



Milan Ledge
Four Rivers



Amalfi Ledge
Salerno



4" Pro-Ledge Band



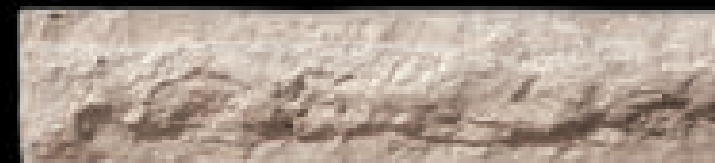
4" Chiseled Limestone Band



3" Milan Ledge Panel



2" Amalfi Ledge Panel



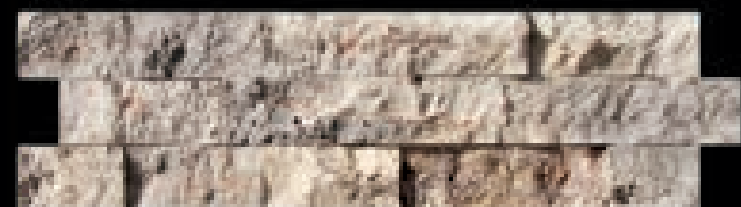
5" Classic Jerusalem Band



6" Chiseled Limestone Band



6" Milan Ledge Panel



6" Amalfi Ledge Panel



6" French Limestone Band



6" Filled Travertine Band



THE CLASSIC SERIES

These alluring oversized tiles were created to mimic the elegant stone adorning some of the most stunning architectural wonders of the world. The exquisite textures included in this series range from finely detailed limestone to deeply eroded travertine. Each profile flows well with both Classical and Modern design styles.

12" x 24" French Limestone - *Silver Ash*



8" Classic Jerusalem - Sabara Beige



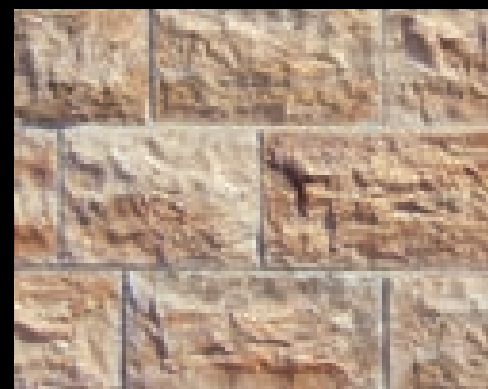
Smooth Limestone - Cream



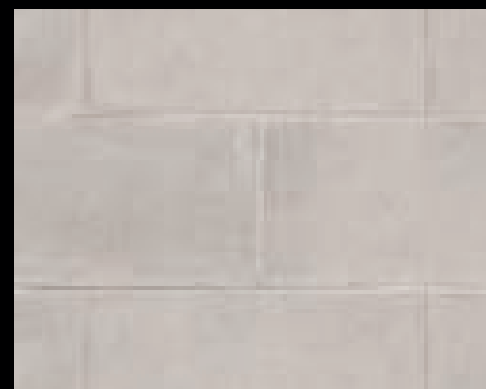
8" Classic Jerusalem
Silver Ash



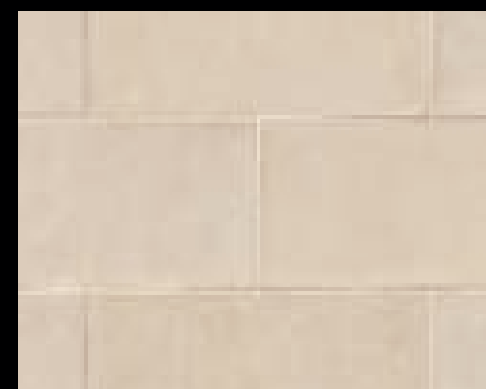
8" Classic Jerusalem
Sabara Beige



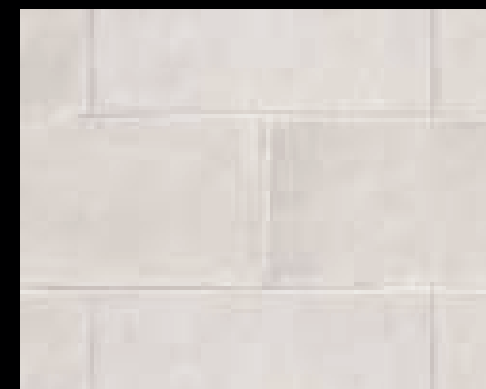
8" Classic Jerusalem
Cayenne



Smooth Limestone
Harvard Grey



Smooth Limestone
Cream



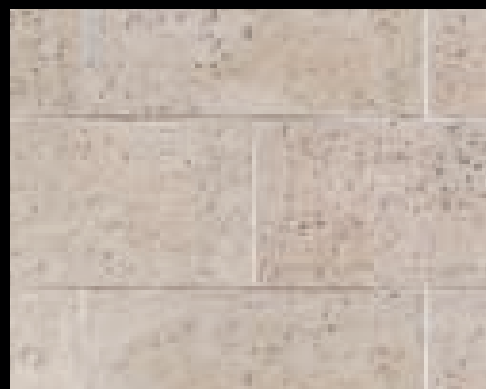
Smooth Limestone
White Sands



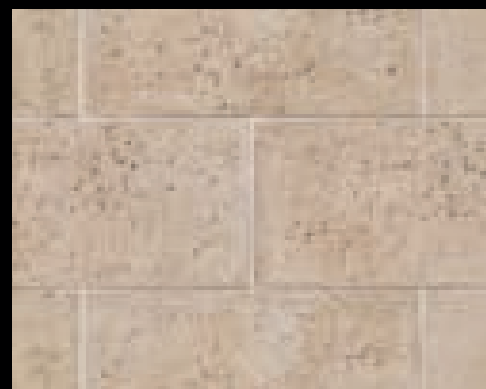
French Limestone - *Country Beige (Featuring Custom French Limestone Radius Pieces)*



Chiseled Limestone - *Cream*



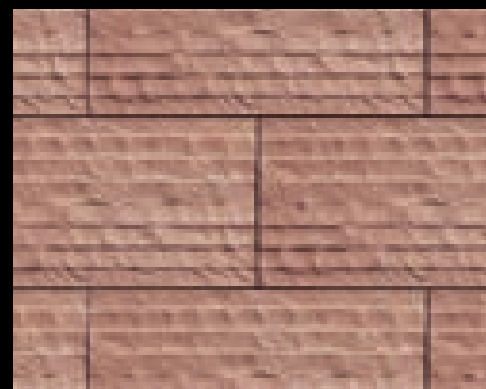
French Limestone
French White



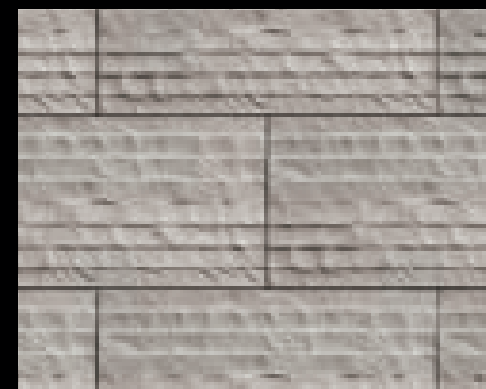
French Limestone
Country Beige



French Limestone
Black Forest



Chiseled Limestone
Sunriver Blend



Chiseled Limestone
Silver Ash



Chiseled Limestone
Cream



Colosseum Travertine - Roman



Caribbean Coral - Santorini Blend (Ashlar Pattern)



Colosseum Travertine
Roman



Colosseum Travertine
Timber Trail



Colosseum Travertine
Black Forest



Caribbean Coral
Barbados (Ashlar Pattern)



Aegean Coral
Santorini Blend (Coursed Pattern)



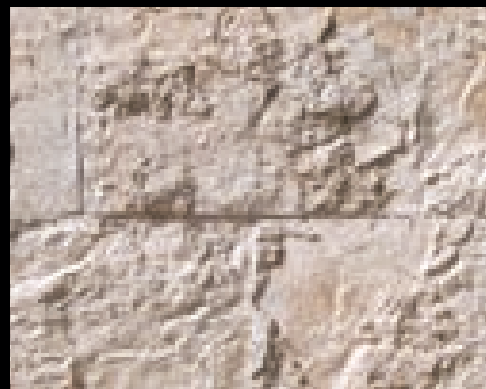
Aegean Coral
White Sands (Coursed Pattern)



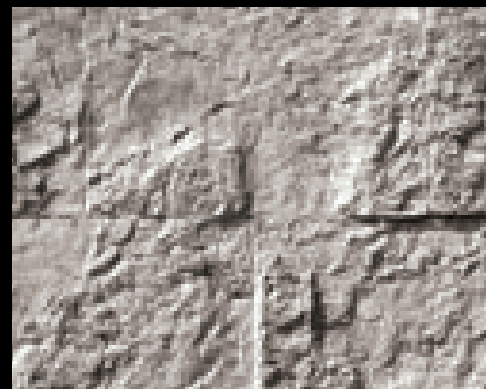
The Getty Stone - Embassy Blend



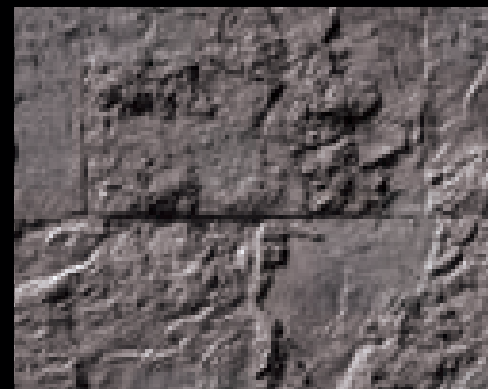
Sand Canyon Flagstone - Amber Glow



The Getty Stone
Embassy Blend



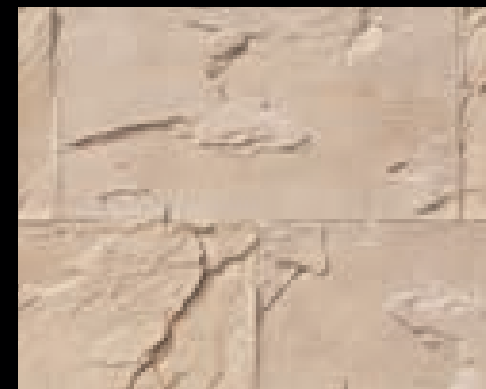
The Getty Stone
Silver Ash



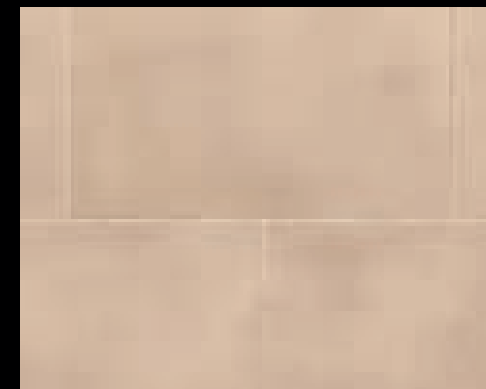
The Getty Stone
Black Forest



Sand Canyon Flagstone
Palomar Blend



Sand Canyon Flagstone
Desert Beige



Sand Canyon Honed
Desert Beige



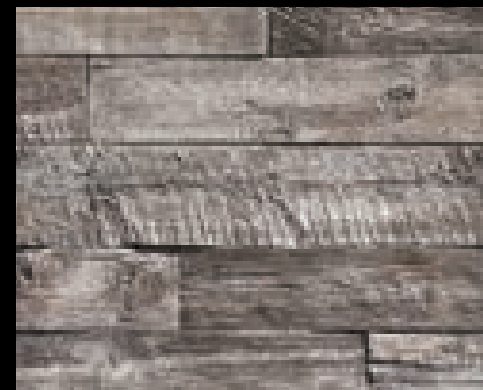
WOODSTONE SERIES

The WoodStone Series is a low maintenance, thin concrete veneer that replicates the look and feel of natural wood. It is an extremely durable product that is insect and fire resistant.

Barn WoodStone - Rustic Farmhouse



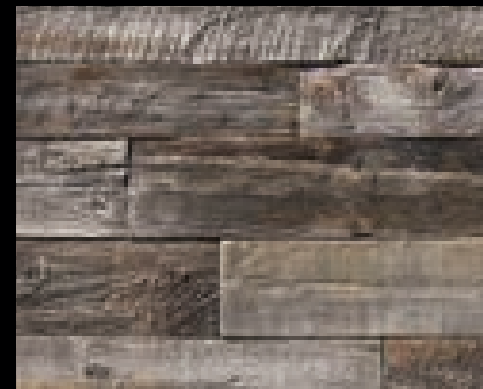
Barn WoodStone - *Cannery Blend*



Barn WoodStone
Rustic Farmhouse



Barn WoodStone
Spring Harvest



Barn WoodStone
Cannery Blend



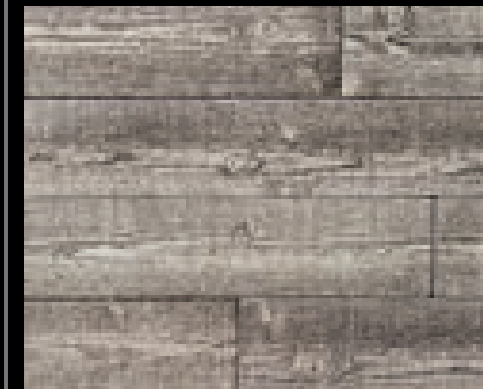
Barn WoodStone
Old Frontier



Rough Cut WoodStone
Antique White



Rough Cut WoodStone
Cedar



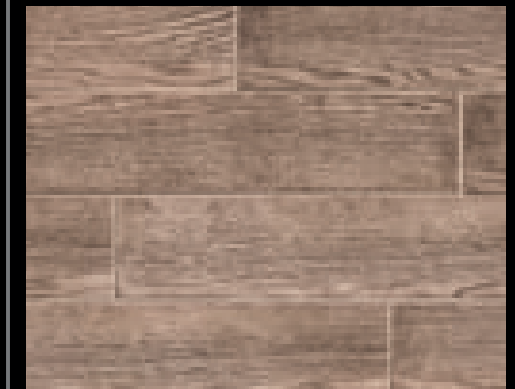
Rough Cut WoodStone
Deadwood



Rough Cut WoodStone
Rustic Cedar



Refined WoodStone
Antique White



Refined WoodStone
Red Oak



Refined WoodStone
Deadwood



Refined WoodStone
Blackened Oak



THE DESIGNER SERIES

This unique series contains a variety of stylish modern profiles. These sleek, highly-textured veneers were created for the designer looking to add a touch of minimalistic style to their project. The continuous linear patterns compliment both modern and contemporary architectural designs.

(Left) Playa Vista Limestone - *Black Forest*
(Center) Playa Vista Limestone - *Alaskan Sunset*
(Right) Playa Vista Limestone - *Cream*



Lennox Stone - Painted White



The Wave - Painted White



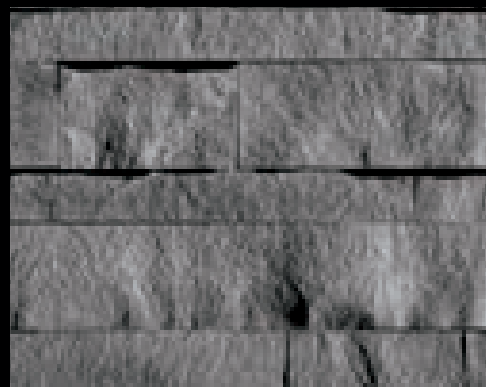
Lennox Stone - Astoria White



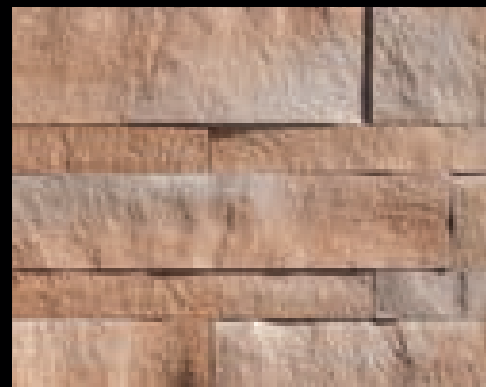
Playa Vista Limestone - Cream



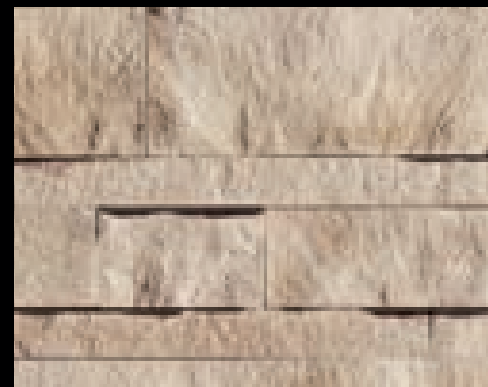
3" Split Limestone - Genoa Sands



Playa Vista Limestone
Black Forest



Playa Vista Limestone
Alaskan Sunset



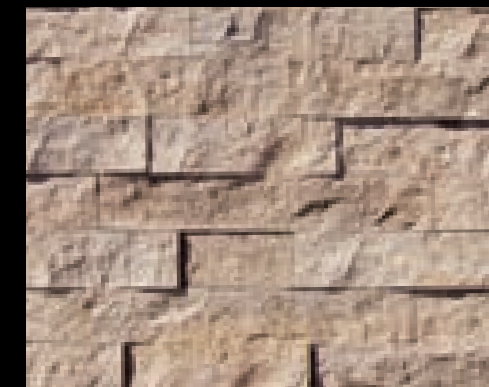
Playa Vista Limestone
Cream



3" Split Limestone
Grey



3" Split Limestone
Walnut



3" Split Limestone
Genoa Sands



CUT STONE SERIES

The Cut Series features a variety of profiles that replicate the look of natural thin-cut veneer selected from quarries across North America. The gorgeous natural textures and rich color hues highlight the inherent beauty that make these stone veneer styles so desirable within the design community.

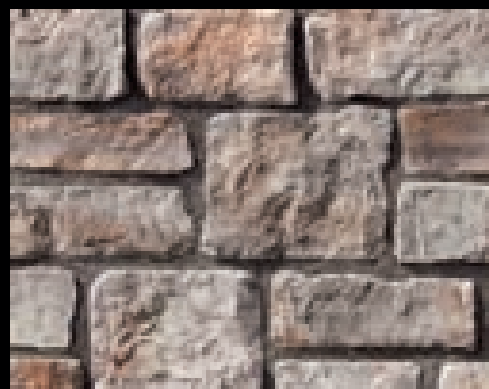
Pavilion Stone - Pine Creek



Valley Cobble - Indian Springs



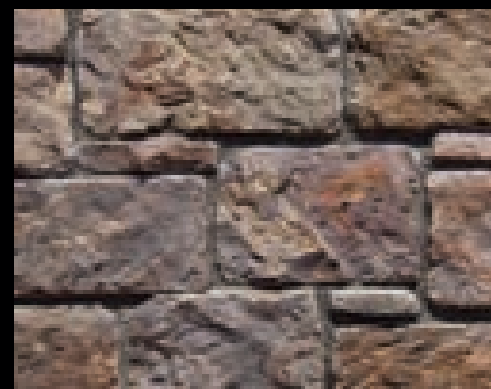
Osage - Fossil Bay



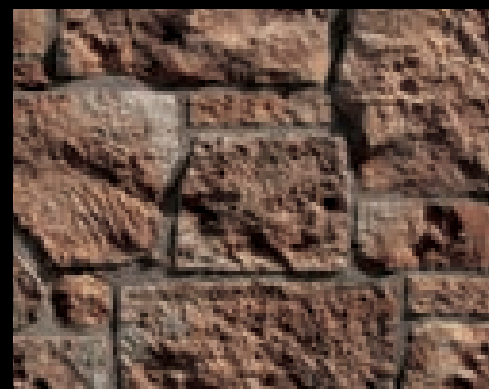
Canyon Cobble
Wind River



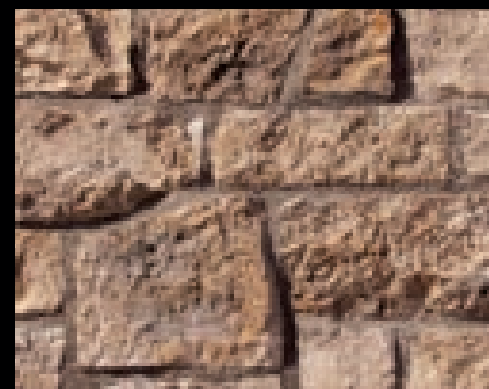
Canyon Cobble
Saratoga Springs



Valley Cobble
Desert Sunset



Osage
Dakota Brown



Osage
Fossil Bay



Osage
Ancient Reef



VILLA STONE SERIES

We searched up and down the Mediterranean coast to find the perfect blend of stone shapes and textures that embodied European old world architecture. Our Villa Stone profiles exemplify the unique characteristics of some of the most sought after types of stone adorning villas and chateaus across Europe.

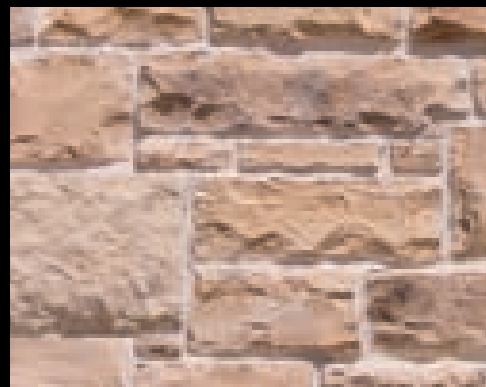
Italian Villa® - Volterra



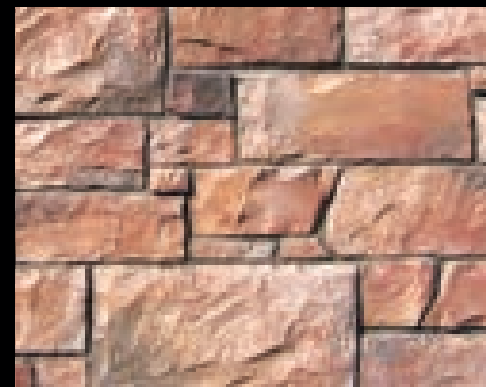
Venetian Villa® - *Texas Cream*



Venetian Villa® - *Madison County*



Venetian Villa®
Versailles



Venetian Villa®
Sunset Blend



Venetian Villa®
Dakota Brown



Venetian Villa®
Madison County



Venetian Villa®
Palazzo



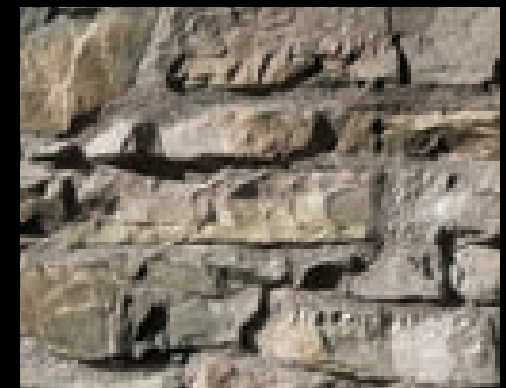
Venetian Villa®
Grey



Italian Villa® - *Chablis with Mortar Wash*



Italian Villa® - *Volterra*



Italian Villa®
Provo Canyon Grey



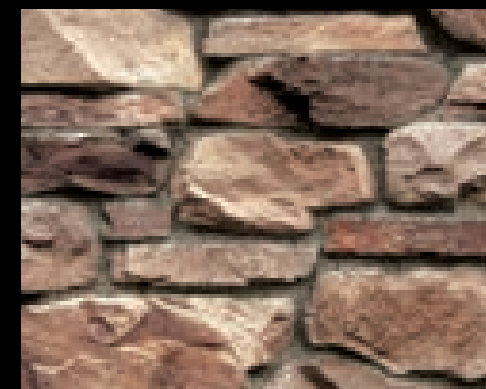
Italian Villa®
Verona



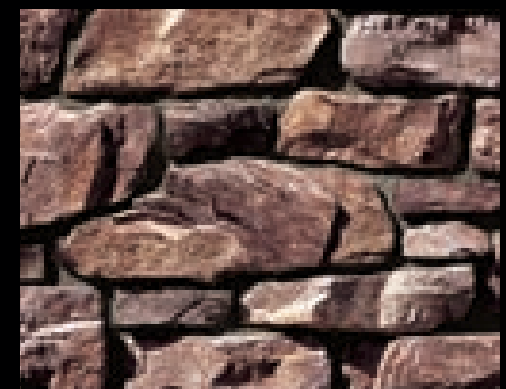
Italian Villa®
Aspen



Italian Villa®
Dakota Brown



Italian Villa®
Volterra



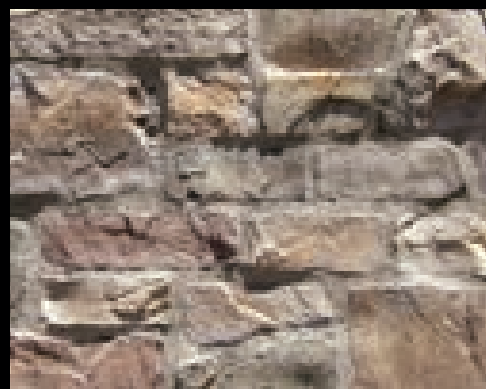
Italian Villa®
Portabella



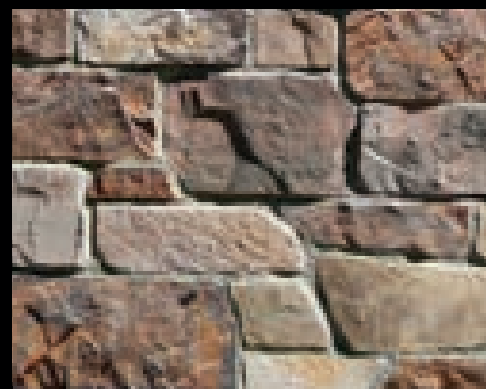
Tuscan Villa® - *Florentine*



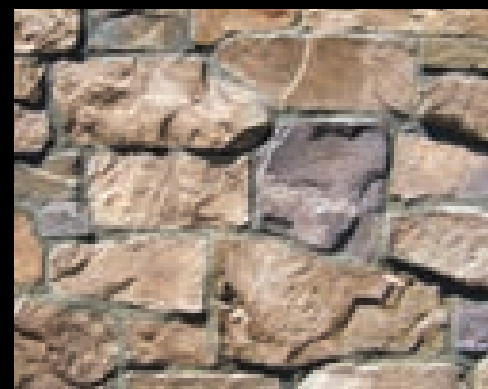
Tuscan Villa® - *Prairie Moss*



Tuscan Villa®
Monarch



Tuscan Villa®
Seville



Tuscan Villa®
Florentine



Tuscan Villa®
Dakota Brown



Tuscan Villa®
Prairie Moss



Tuscan Villa®
Romano

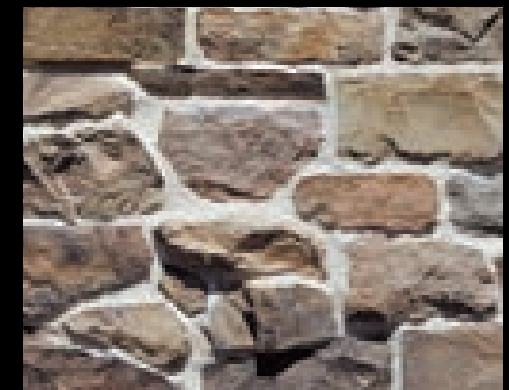
Square foot coverage is based on installation with a 1/2" mortar joint.
Other colors are available for this profile.



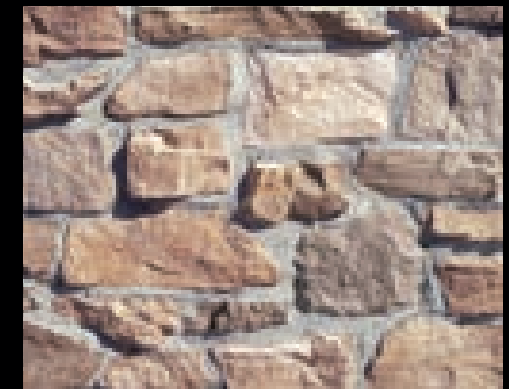
French Country Villa® - Verona



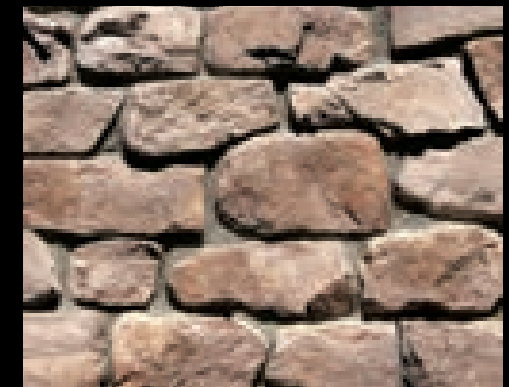
French Country Villa® - Volterra



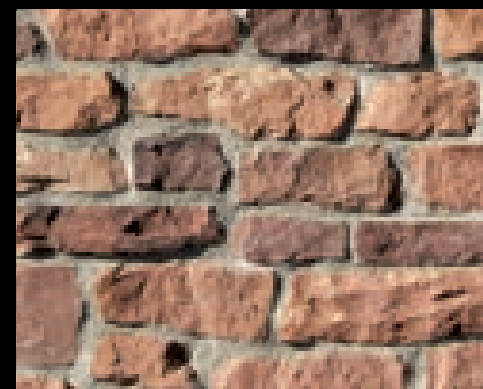
French Country Villa®
Bordeaux



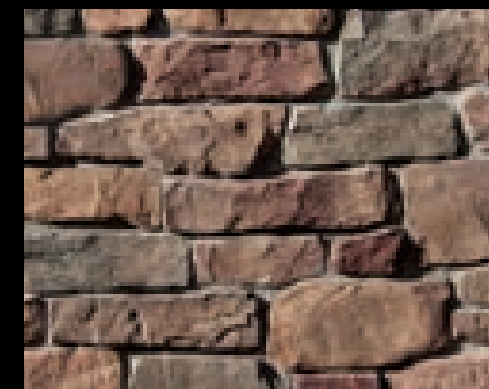
French Country Villa®
Champagne



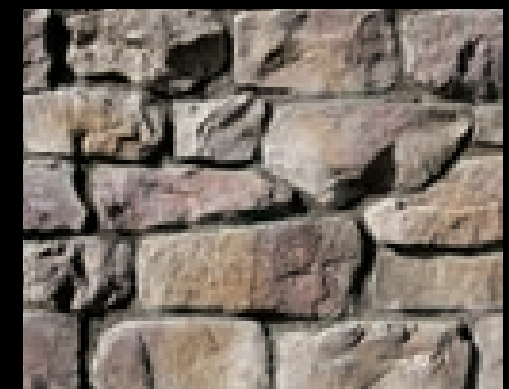
French Country Villa®
Verona



French Country Villa®
Carmel Mountain



French Country Villa®
Chablis



French Country Villa®
Grey Quartzite



LEDGESTONE SERIES

We feature a vast selection of ledgerstone profiles which replicate some of the most beautiful quarried ledgerstones from around the country. Choose from a wide array of shapes, sizes and colors to compliment any architectural project, ranging from rustic to contemporary in style.

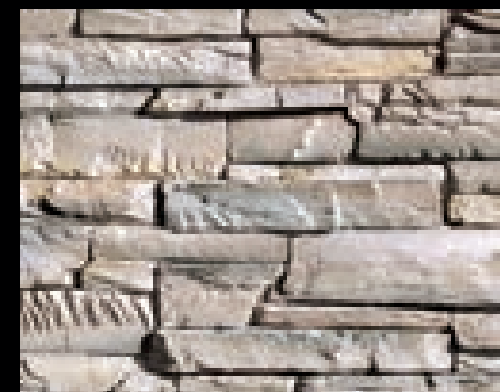
70% Old World Ledge - *Chablis*
30% Appalachian Fieldstone - *Chablis*



Old World Ledge - *Sunset Blend (Grouted)*



Old World Ledge - *Grey Quartzite (Dry Stacked)*



Old World Ledge
Antique Cream (Dry Stacked)



Old World Ledge
Burnt Oak (Dry Stacked)



Old World Ledge
Brookside (Grouted)



Old World Ledge
Cape Cod Grey (Dry Stacked)



Old World Ledge
Charleston (Grouted)



Old World Ledge
Black Rundle (Dry Stacked)



Old World Ledge
Summerlin Blend (Dry Stacked)



Old World Ledge
Chablis (Dry Stacked)



Old World Ledge
Monarch (Dry Stacked)



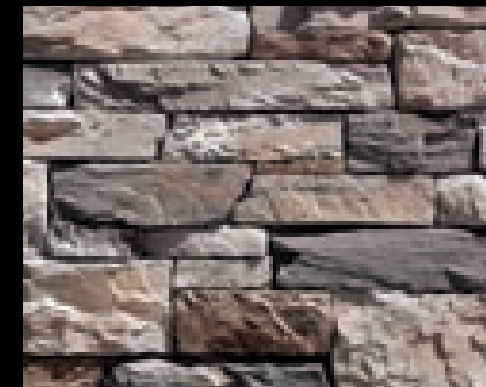
Old Country Ledge - *Goleta Blend (Dry Stacked)*



Old Country Ledge - *Carmel Mountain (Grouted)*



Old Country Ledge
Shasta (Dry Stacked)



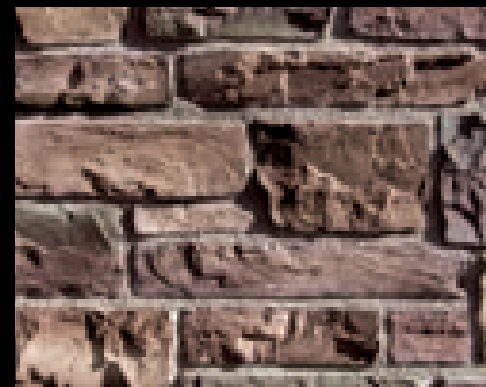
Old Country Ledge
Huron (Dry Stacked)



Old Country Ledge
Greycliffe (Dry Stacked)



Old Country Ledge
Dakota Brown (Dry Stacked)



Old Country Ledge
Coastal Brown (Grouted)



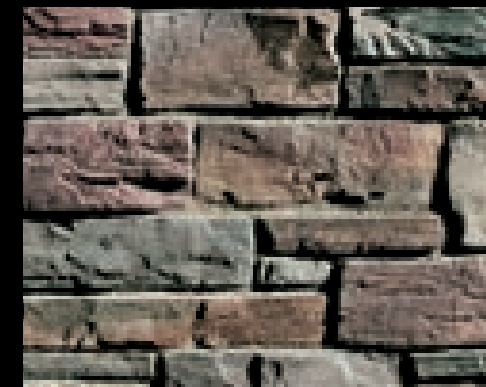
Old Country Ledge
Carmel Mountain (Grouted)



Old Country Ledge
Madison County (Grouted)



Old Country Ledge
Chablis (Dry Stacked)



Old Country Ledge
Aspen (Grouted)



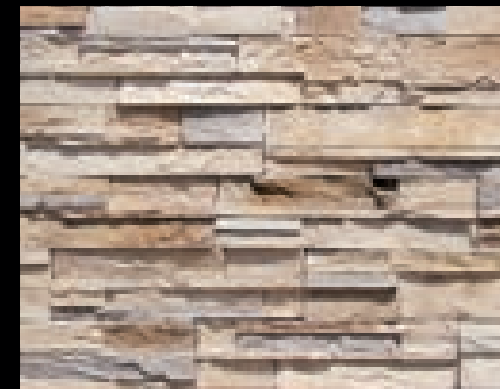
Pro-Ledge® - *Black Forest*



Pro-Ledge® - *Brookside*



Pro-Ledge®
White



Pro-Ledge®
Oakbrook



Pro-Ledge®
Alaskan Sunset



Pro-Ledge® - *Brookside*



Pro-Ledge®
Black Forest



Pro-Ledge®
Brookside



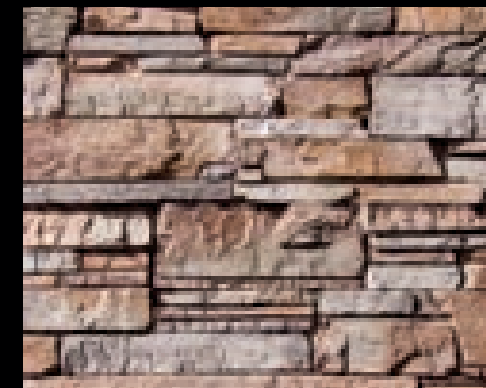
Pro-Ledge®
Chablis



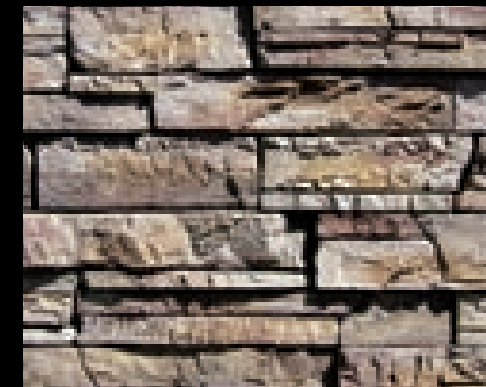
Coronado Honey Ledge - *Golden Harvest*



Coronado Honey Ledge - *Four Rivers*



Coronado Honey Ledge
Shasta



Coronado Honey Ledge
Grey Quartzite



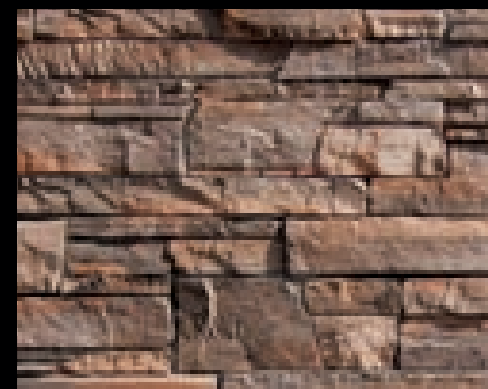
Coronado Honey Ledge
Huron



Coronado Honey Ledge
Golden Harvest



Coronado Honey Ledge
Chablis



Coronado Honey Ledge
Sioux Falls



Coronado Honey Ledge
Four Rivers



Coronado Honey Ledge
Carmel Mountain



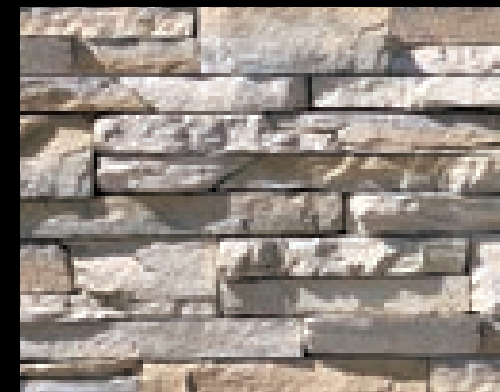
Coronado Honey Ledge
Rocky Mountain Rundle



Quick Stack® - *Antique Cream*



Quick Stack® - *Carmel Mountain*



Quick Stack®
Antique Cream



Quick Stack®
Cape Cod Grey



Quick Stack® - *Aspen*



Quick Stack®
Carmel Mountain



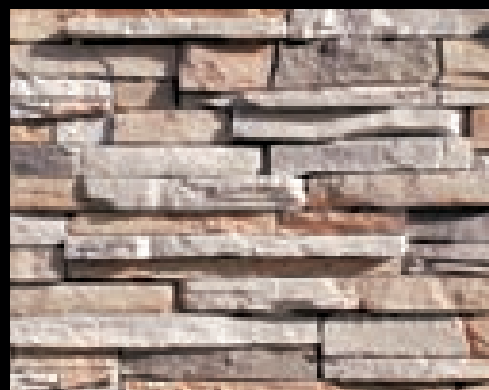
Quick Stack®
Cathedral Grey



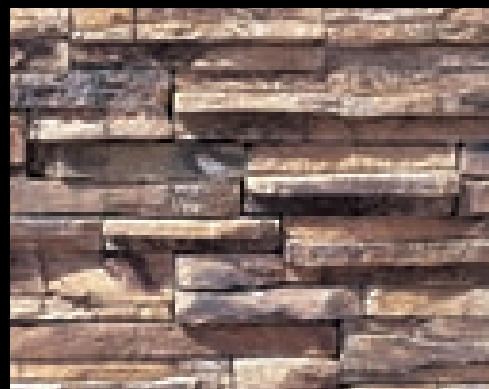
Quick Stack®
Coastal Brown



Quick Stack®
Aspen



Virginia Ledge
Golden Sand



Virginia Ledge
Storm Brown



Virginia Ledge
Aspen



Virginia Ledge
Coastal Brown



Virginia Ledge - *Cape Cod Grey*



Sierra Ledge - *Bourbon Creek*



Sierra Ledge
Brookside



Sierra Ledge
Bourbon Creek



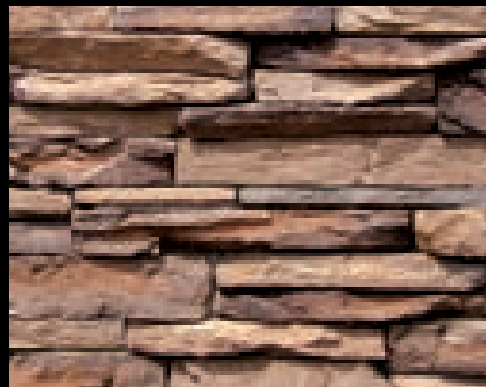
Sierra Ledge
Cathedral Grey



Eastern Mountain Ledge® - *Dakota Brown*



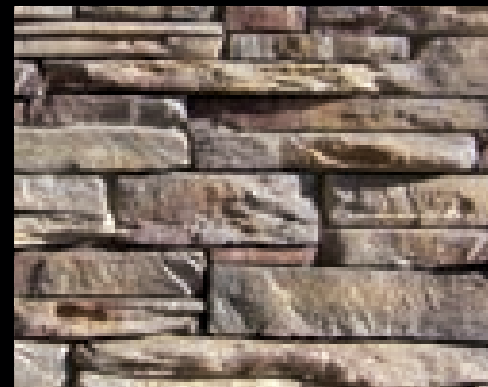
Eastern Mountain Ledge® - *Carmel Mountain*



Eastern Mountain Ledge®
Brookside



Eastern Mountain Ledge®
Wheat



Eastern Mountain Ledge®
Grey Quartzite



Eastern Mountain Ledge®
English Grey



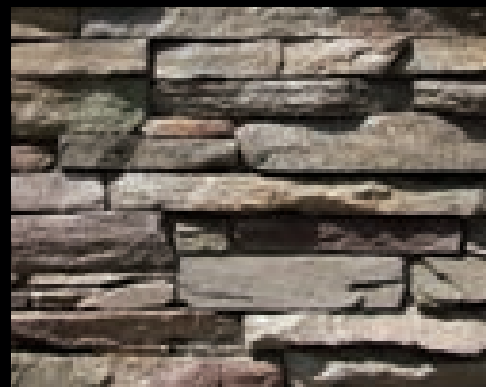
Eastern Mountain Ledge®
Chestnut



Eastern Mountain Ledge®
Carmel Mountain



Eastern Mountain Ledge®
Chablis



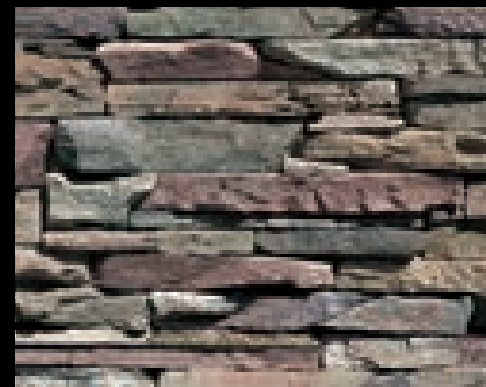
Eastern Mountain Ledge®
Madison County



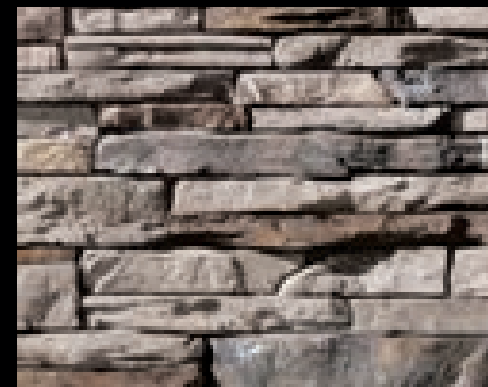
Eastern Mountain Ledge®
Dakota Brown



Eastern Mountain Ledge®
Coastal Brown



Eastern Mountain Ledge®
Aspen



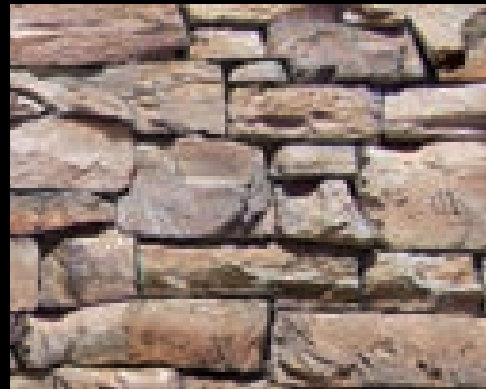
Eastern Mountain Ledge®
Huron



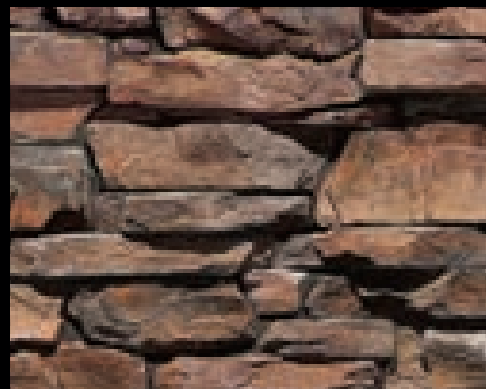
Rocky Mountain Ledge
Copper Canyon (Dry Stacked)



Rocky Mountain Ledge
Meadow Springs (Dry Stacked)



Rocky Mountain Ledge
Sandy Peaks (Dry Stacked)



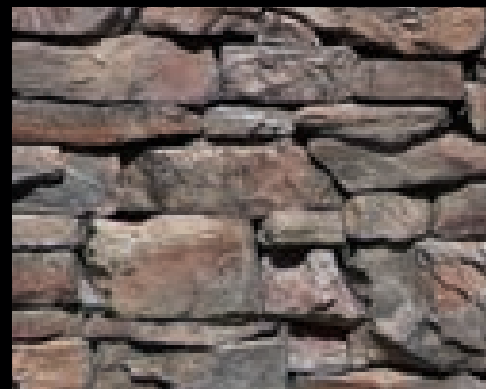
Rocky Mountain Ledge
Bitterroot (Grouted)



Rocky Mountain Ledge - Greycliffe (Dry Stacked)



Canyon Ledge - Dakota Brown



Rocky Mountain Ledge
Greycliffe (Dry Stacked)



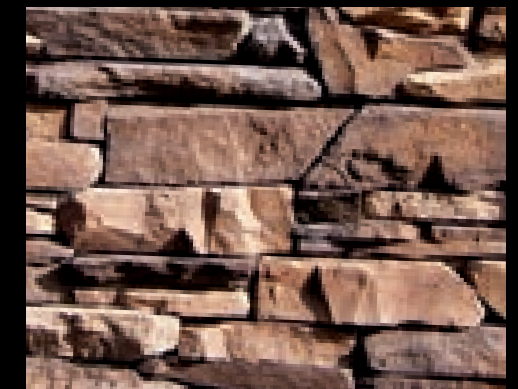
Rocky Mountain Ledge
Black Rundle (Dry Stacked)



Canyon Ledge
Cape Cod Grey



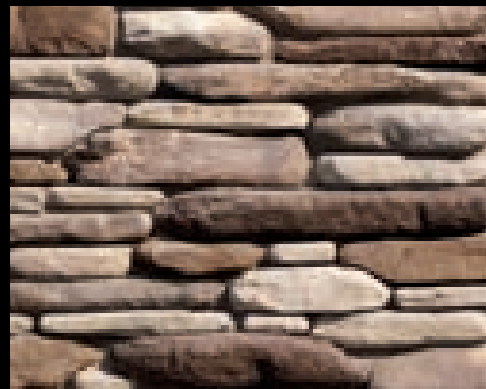
Canyon Ledge
Sunset Blend



Canyon Ledge
Brookside



Tumbled Ledge
Sunset Blend



Tumbled Ledge
Monterey



Tumbled Ledge
Chablis



Tumbled Ledge
Dakota Brown



Tumbled Ledge - Chablis



Tumbled Ledge
Nottingham



Tumbled Ledge
Grey



CORONADO STRIP STONE

Coronado Strip Stone - Fawn



Coronado Strip Stone
Fawn



Coronado Strip Stone
Black Forest



MOUNTAIN STRIP STONE

Mountain Strip Stone - Brookside



Mountain Strip Stone
Brookside



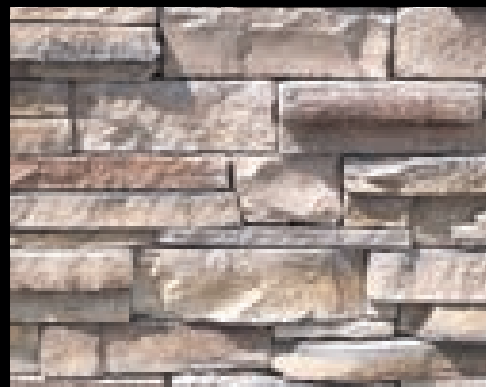
Mountain Strip Stone
Chablis



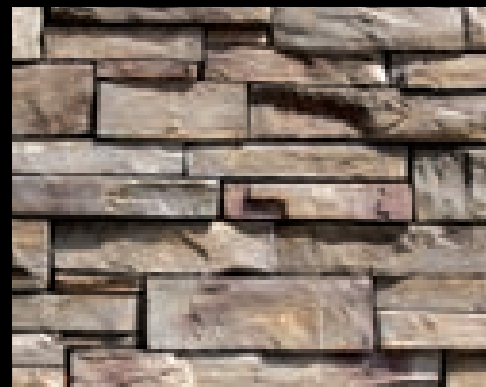
Idaho Drystack - *Smokey Grey*



Idaho Drystack - *Carmel Mountain*



Idaho Drystack
Antique Buff



Idaho Drystack
Grey Quartzite



Idaho Drystack
Cape Cod Grey



Idaho Drystack
Aspen



Idaho Drystack
Chablis



Idaho Drystack
Carmel Mountain



Weathered Edge - *Coal Canyon*



Weathered Edge - *Sunhill Blend*



Weathered Edge
Foxhill Blend



Weathered Edge
Sunhill Blend



Weathered Edge
Wisconsin Blend



Weathered Edge - *Chablis*



Weathered Edge
Coal Canyon



Weathered Edge
Aspen



Weathered Edge
Chablis



ASHLAR & RUBBLE SERIES

The skillfully handcrafted stones from this series can be traced back to times when artisan masons meticulously chiseled blocks of limestone to construct majestic structures. These magnificent stone profiles possess wonderfully sculpted textures and can be installed in an ashlar or coursed pattern.

Carolina Rubble - Sandstone



Country Rubble - Grey Quartzite (Dry Stacked)



Country Rubble - Aspen (Grouted)



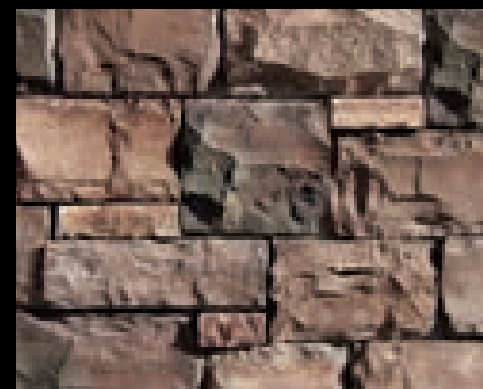
*Country Rubble
Antique Cream (Dry Stacked)*



*Country Rubble
Grey Quartzite (Grouted)*



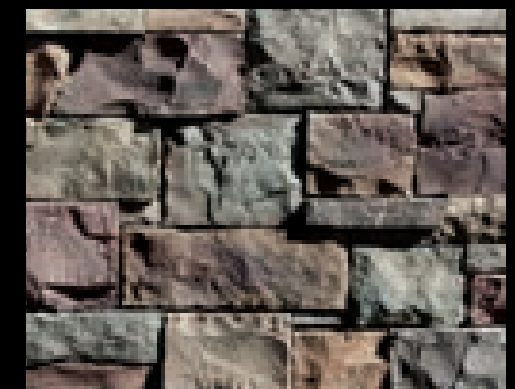
*Country Rubble
Sunset Blend (Dry Stacked)*



*Country Rubble
Coastal Brown (Dry Stacked)*



*Country Rubble
Golden Brown (Dry Stacked)*



*Country Rubble
Aspen (Dry Stacked)*



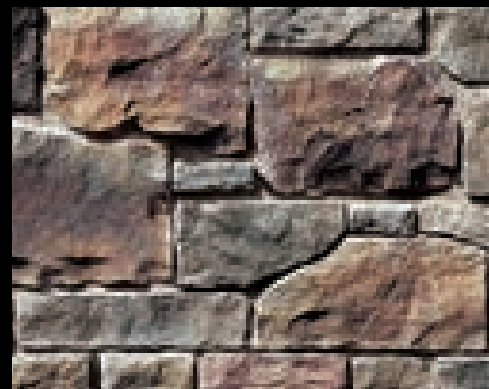
Carolina Rubble - *Dakota Brown*



Carolina Rubble - *Sandstone*



Carolina Rubble
Chablis



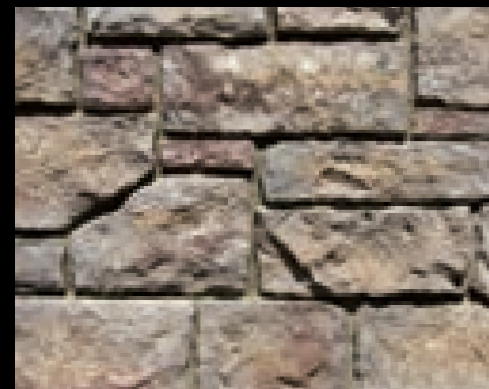
Carolina Rubble
Aspen



Carolina Rubble
Dakota Brown



Carolina Rubble
Black Hills



Carolina Rubble
Grey Quartzite



Carolina Rubble
Sandstone



English Rubble - *Dakota Brown*



Sea Wall at 18th Fairway - Pebble Beach, CA

English Rubble - *Pebble Beach Blend*



English Rubble
Black Hills



English Rubble
Dakota Brown



English Rubble
Newport Sandstone



Santa Barbara - Sand Dune (Coursed Pattern)



Santa Barbara - Brookshire (Ashlar Pattern)



Santa Barbara
English Grey (Ashlar Pattern)



Santa Barbara
Sand Dune (Ashlar Pattern)



Santa Barbara
Brookshire (Ashlar Pattern)



Country Castle - Lompoc



Country Castle - Madison County



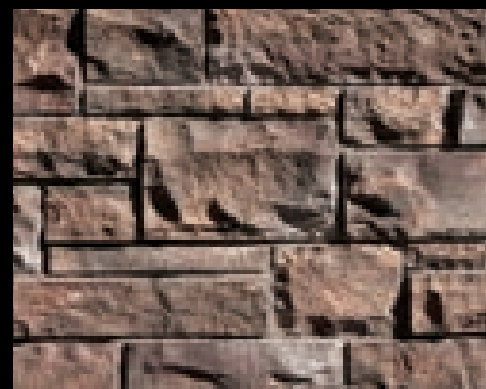
Country Castle
English Grey



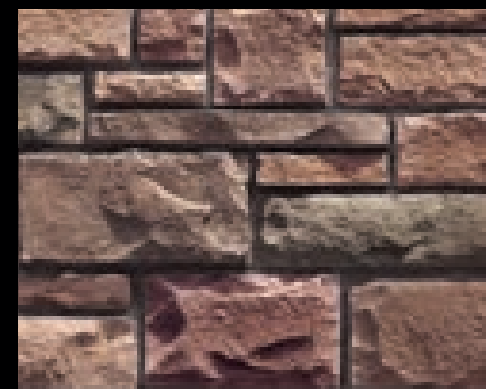
Country Castle
Shasta



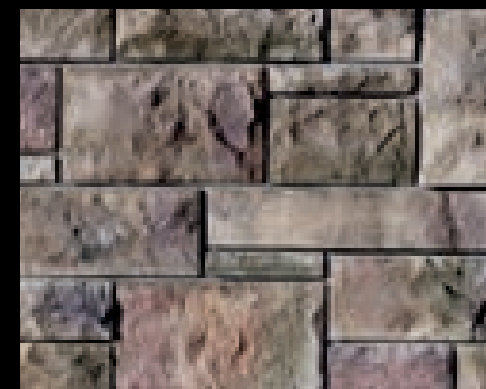
Country Castle
Aspen



Country Castle
Dakota Brown



Country Castle
Chablis



Country Castle
Madison County

Square foot coverage is based on installation with a 1/2" mortar joint.
Other colors are available for this profile.



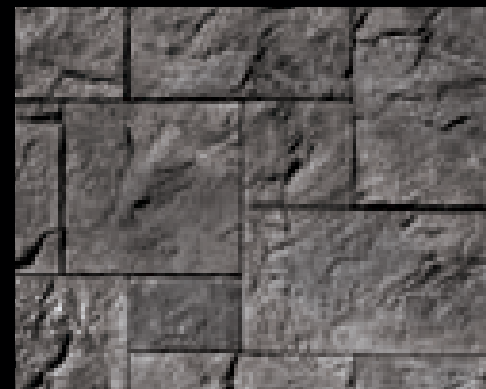
Belgian Castle - *Dakota Brown (Grouted)*



Belgian Castle - *Chablis (Dry Stacked)*



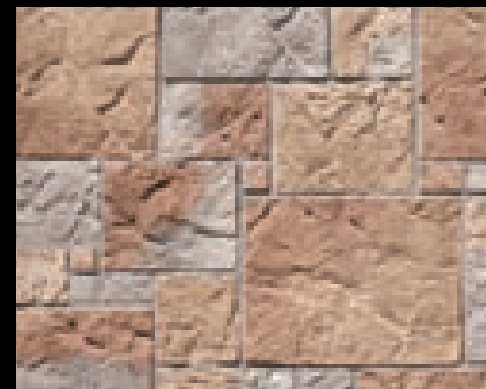
Belgian Castle
White (Dry Stacked)



Belgian Castle
Black Forest (Dry Stacked)



Belgian Castle
Dakota Brown (Dry Stacked)



Belgian Castle
Alaskan Sunset (Grouted)



Belgian Castle
Chablis (Grouted)



Belgian Castle
Brookside (Dry Stacked)



IRREGULAR SHAPED STONE SERIES

The irregular shaped stones shown in this series replicate a diverse group of fieldstones and river rocks that are native to the Eastern United States. These stones feature textures forged by millions of years of erosion, and a color palette of rich earthy hues that blend seamlessly with outdoor environments.

Appalachian Fieldstone - Bourbon



Minnesota Fieldstone - *Dakota Brown*



Minnesota Fieldstone - *Coastal Brown*



Minnesota Fieldstone
Wisconsin Blend



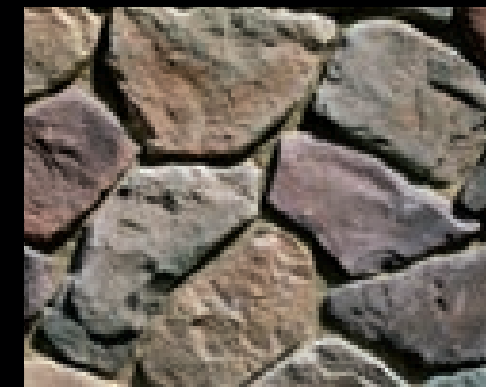
Minnesota Fieldstone
Carmel Mountain



Minnesota Fieldstone
Dakota Brown



Minnesota Fieldstone
Chablis



Minnesota Fieldstone
Aspen



Minnesota Fieldstone
Huron

Square foot coverage is based on installation with a 1/2" mortar joint.
Other colors are available for this profile.



Appalachian Fieldstone - *Mountain Sunset*



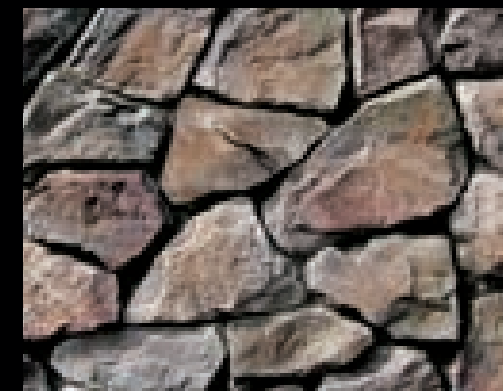
Appalachian Fieldstone - *Grey Quartzite*



Appalachian Fieldstone
Naples



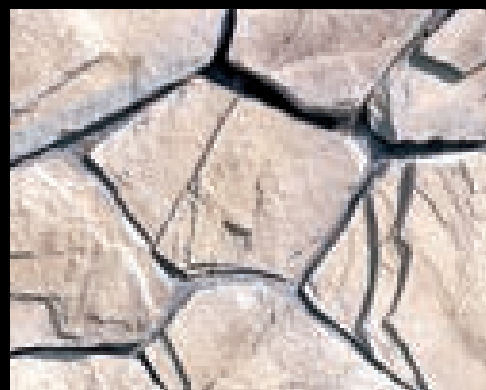
Appalachian Fieldstone
Mountain Sunset



Appalachian Fieldstone
Madison County



Appalachian Fieldstone
Dakota Brown



Split Fieldstone
Lompoc



Split Fieldstone
Silver Grey



Split Fieldstone
Carmel Mountain



Split Fieldstone
Dakota Brown



Split Fieldstone - *Bordeaux*



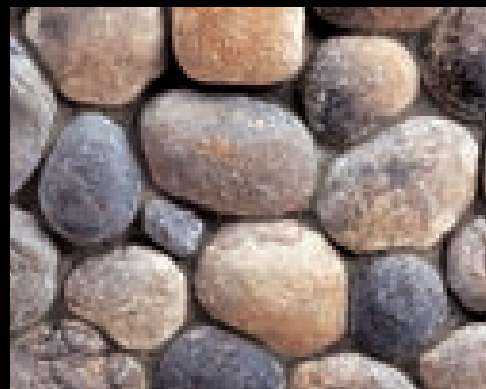
Viejo Ranch - *Viejo Blend*



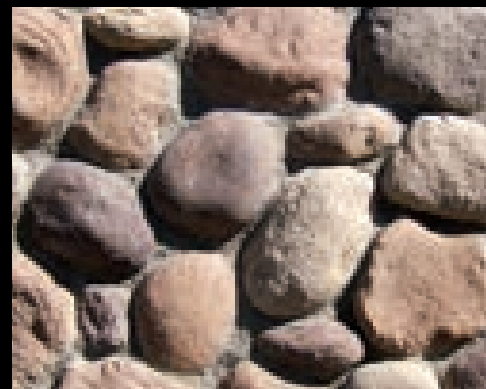
River Rock - Seaside



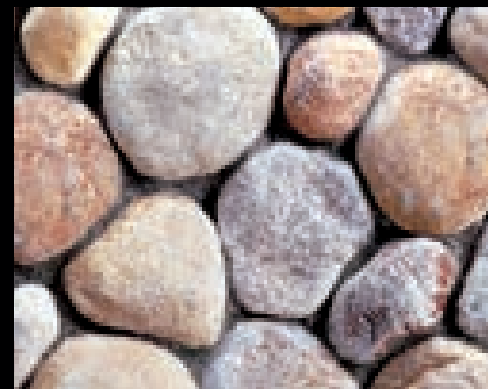
Creek Rock - Southwest Blend



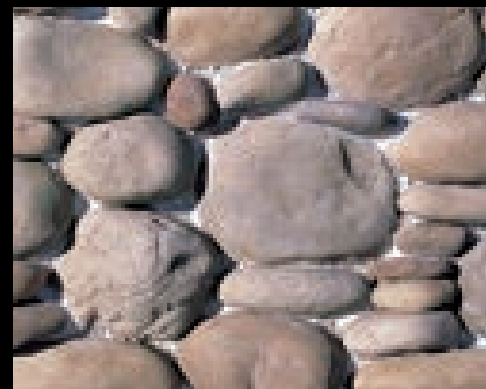
River Rock
Reno Blend



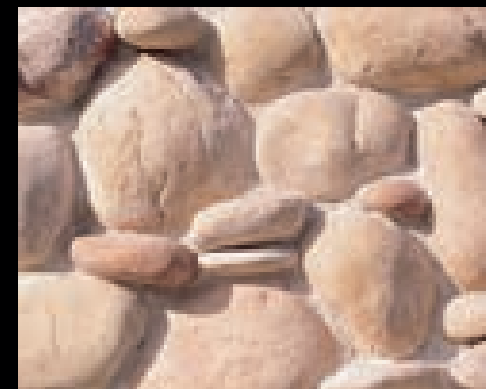
River Rock
Sienna Brown



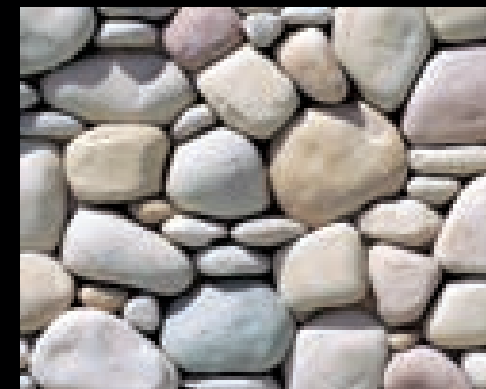
River Rock
Desert Rust



Creek Rock
Apache Brown



Creek Rock
Calico Sand



Creek Rock
Palm Springs Blend



STONE COMBINATIONS

Multiple stone veneer styles and colors can be combined to create a custom appearance. Varying the percentage of each profile allows designers to create drastically different looks, which enables further refinement of the style they're trying to achieve.

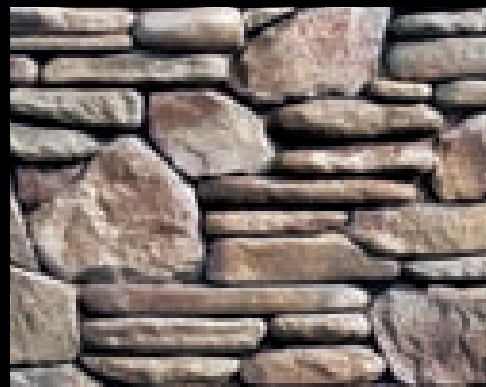
70% Eastern Mountain Ledge® - *Coastal Brown*
30% Minnesota Fieldstone - *Coastal Brown*



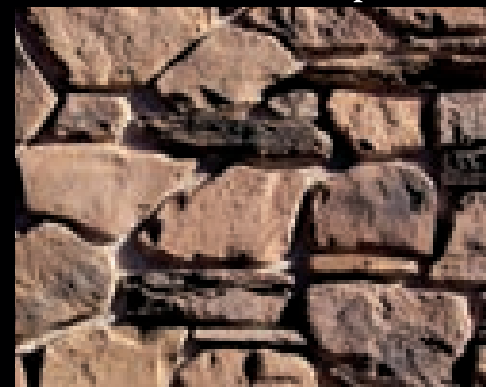
(Left Wall) French Limestone with 4" Chiseled Limestone Band - *Country Beige*
(Center Column) Mountain Strip Stone - *Chablis*



80% French Country Villa® - *Volterra*
20% Viejo Ranch - *Viejo Blend*



50% Minnesota Field. - *Grey Quartzite*
50% Tumbled Ledge - *Grey Quartzite*



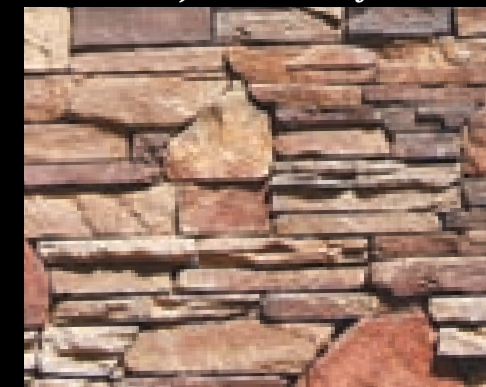
80% Minnesota Field. - *Wheat & Chestnut*
20% Eastern Mtn. Ledge - *Wheat & Chestnut*



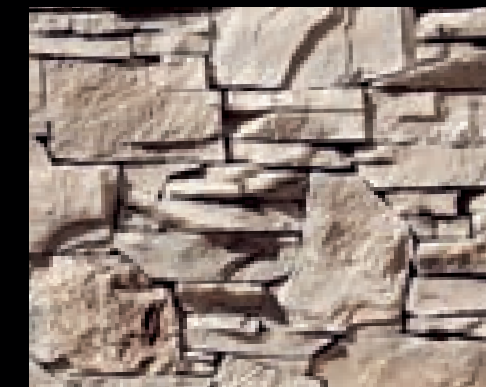
80% Eastern Mtn. Ledge - *Dakota Brown*
20% Appalachian Field. - *Dakota Brown*



50% Eastern Mtn. Ledge - *Madison County*
50% Appalachian Field. - *Madison County*



70% Eastern Mtn. Ledge - *Carmel Mtn.*
30% Minnesota Filed. - *Wisconsin Blend*



70% Split Fieldstone - *Lompoc*
30% Eastern Mtn. Ledge - *Lompoc*

Square foot coverage varies depending on selected profile.
Other colors are available for each of these profiles.



THIN BRICK SERIES

We offer a range of thin brick products that come in a wide variety of sizes, textures and colors. Projects can be enhanced with the alluring look and feel of full bed-depth brick without the need for additional wall tie support that standard brick installations require.

Adobe Brick - Sienna with Mortar Wash



2½" x 8" Special Used Brick - *Country*



2½" x 8" Special Used Brick
Brookside



2½" x 8" Special Used Brick
Country



2½" x 8" Special Used Brick
Tribeca



2½" x 8" Special Used Brick - *Rustic Blend*



2½" x 8" Special Used Brick - *Tribeca*



2½" x 8" Special Used Brick
Rustic Blend



2 1/2" x 8" Special Used Brick - *Eagle Buff*



2 1/2" x 8" Clinker Brick - *Brown Blend*



2 1/2" x 8" Special Used Brick
Bear Creek



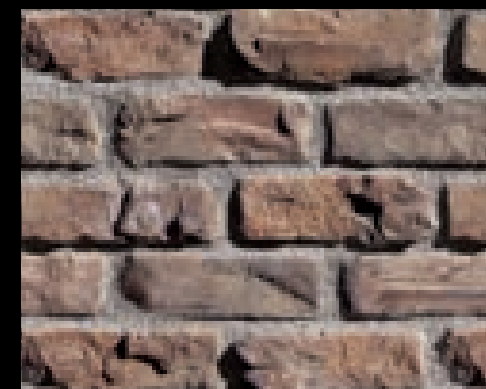
2 1/2" x 8" Special Used Brick
Wolf Grey



2 1/2" x 8" Special Used Brick
Eagle Buff



2 1/2" x 8" Clinker Brick
Eagle Buff



2 1/2" x 8" Clinker Brick
Brown Blend



2 1/2" x 8" Clinker Brick
Antique Red



4" x 12" Oversized Wirecut Brick - *Old Chicago*



2½" x 8" Sculptured Brick - *Eagle Buff*



2½" x 8" Wirecut Brick
La Jolla Blend



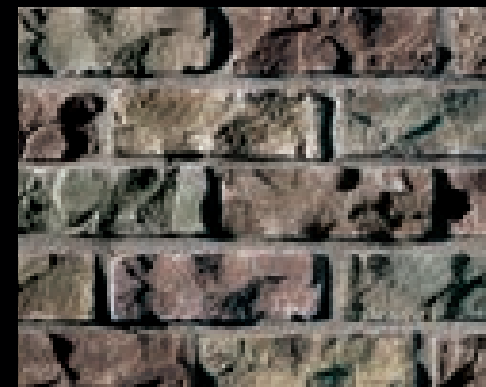
2½" x 8" Wirecut Brick
Spectrum



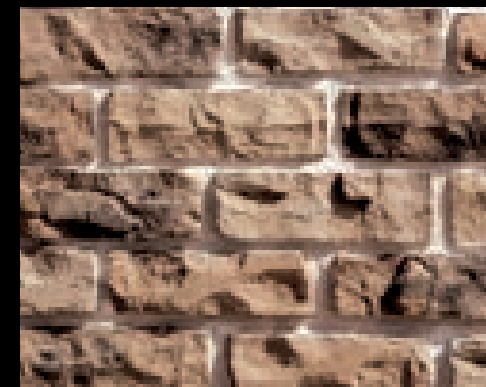
2½" x 8" Wirecut Brick
Wolf Grey



2½" x 8" Sculptured Brick
Rustic Blend



2½" x 8" Sculptured Brick
Aspen



2½" x 8" Sculptured Brick
Wheat



2 1/2" x 8" Sicilian Brick - Ferrara Blend



2 1/4" x 10" Roman Brick - Mezzano



2 1/2" x 8" Sicilian Brick
Ferrara Blend



2 1/2" x 8" Sicilian Brick
Marsala Blend



2 1/2" x 8" Sicilian Brick
Monreale



2 1/4" x 10" Roman Brick
Mezzano



2 1/4" x 10" Roman Brick
Sorano



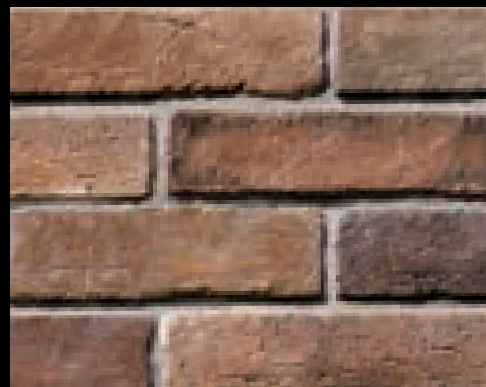
2 1/4" x 10" Roman Brick
Ambrosia



3" x 10" Weathered Brick - *Carmel Mountain*



3" x 10" New England Brick - *Dakota Brown*



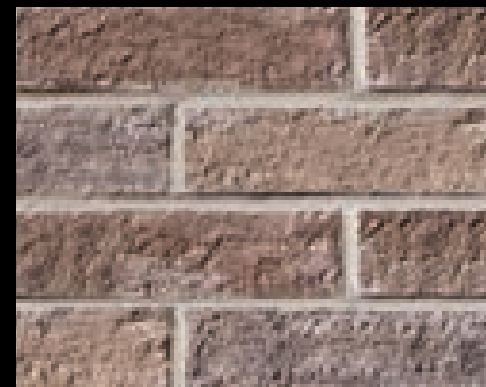
3" x 10" Weathered Brick
Carmel Mountain



3" x 10" Weathered Brick
Antique Red



3" x 10" Weathered Brick
Savannah



3" x 10" New England Brick
Charleston



3" x 10" New England Brick
Dakota Brown



3" x 10" New England Brick
Bear Creek



4" x 16" Adobe Brick - *Sienna with Mortar Wash*



4" x 16" Adobe Brick - *Sienna with Mortar Wash*



4" x 16" Adobe Brick
Haystack



4" x 16" Adobe Brick
Saltillo



4" x 16" Adobe Brick
Sienna



FLOOR TILE SERIES

We have gathered some of the most unique flooring textures from around the world to create a beautiful collection of cement-set concrete tiles. Using a specialized method for color blending, the finished product is virtually indistinguishable from natural stone tile.

Jerusalem Cobble - Antique Sands
Mountain Strip Stone - Fawn

VERSAILLES TRAVERTINE

Versailles Travertine adds a beauty to your home that inspires absolute refinement. From its soft hues to its distinct tumbled textures, Versailles Travertine defines elegance.



Versailles Travertine
Cayenne



Versailles Travertine - *Wheatfield*



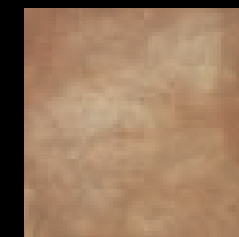
Italian Tile - *Saltillo*

ITALIAN TILE

Italian Tile adds a sense of tradition, warmth and old world charm that other tiles don't possess. This faintly textured tile, coupled with its hard-lined edge, creates a feel of natural symmetry.



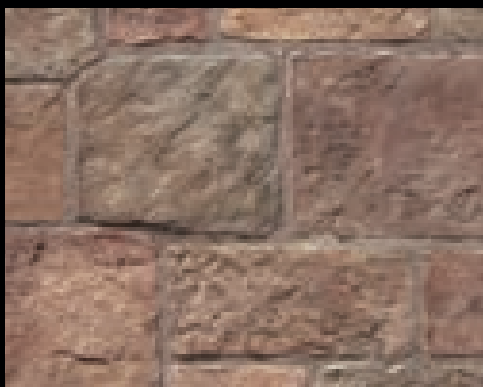
Italian Tile
Mission Red



Italian Tile
Buckskin

JERUSALEM COBBLE

Jerusalem Cobble brings the ancient world to your footsteps. Replicating the old cobble roads of Jerusalem with highly detailed textures and rustic earth tone colors, Jerusalem Cobble adds an old world feel to any setting.



Jerusalem Cobble
Heritage Blend



Jerusalem Cobble - *Antique Sands*



Mexican Tile - *Milano*

MEXICAN TILE

Our Mexican Tile is popular throughout the Southwest due to its genuine look and feel. This tile is for those seeking the authentic beauty and style of a Spanish Hacienda.



Mexican Tile
Saltillo



Mexican Tile
Burnt Orange

BELGIAN TILE

It is the beauty of Belgian Tile that gives it so much charm. This attractive tile can be used in several different indoor and outdoor settings.



Belgian Tile
Antique Buff



Belgian Tile
Rustic Brown



Belgian Tile - *Autumn Leaves*



River Washed Tile - *Desert Rust*

RIVER WASHED TILE

River Washed Tile exudes a sense of tranquility. This lightly textured stone mimics natural color blends and works perfectly with indoor and outdoor mosaics.



River Washed Tile
Desert Rust

River Washed Tile
Grey Granite

RANDOM FLAGSTONE TILE

Random Flagstone has a timeless beauty. This uniquely shaped tile will match almost any architecture and stone veneer. In addition, the shape makes it extremely easy to install.



Random Flagstone Tile
Grey



Random Flagstone Tile
Brookside



Random Flagstone Tile - *Riviera Blend*



European Cobble - *Alpine Blend*

EUROPEAN COBBLE

European Cobble radiates the charm and ambience of Europe with an array of old world colors. This profile adds the authentic touch and feel of an ancient cobble stone street.



European Cobble
Alpine Blend



European Cobble
Monaco Blend

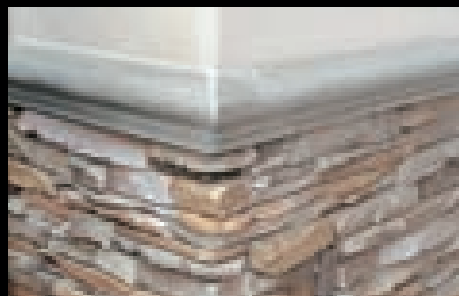
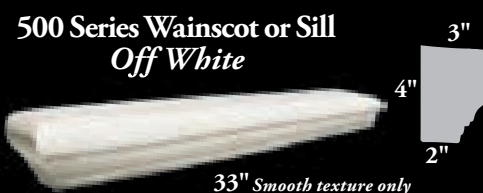


TRIM & ACCESSORIES

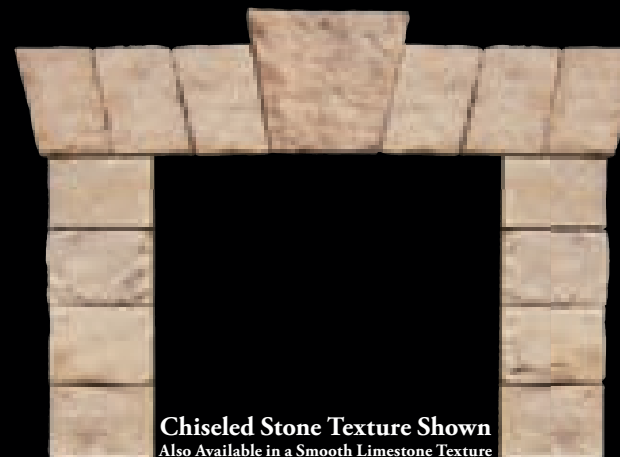
Coronado Stone offers one of the largest architectural stone accessory product lines in the industry. These meticulously handcrafted accents will add the extra finishing touches to your amazing project.

*Flagstone Wall Cap - Lompoc
Italian Villa® - Dakota Brown*

MOLDINGS & SILLS



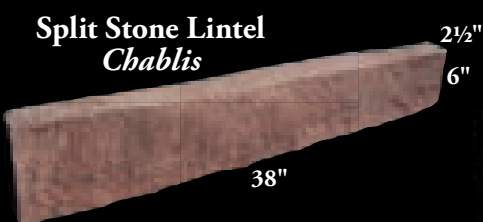
WINDOW STONES AND KEYSTONE



ARCHITECTURAL TRIM STONE



Architectural Trim Stone - *Brownstone*
Thickness: 1 1/2" *Outside measurements shown.



*Can be cut into an L-shape for recessed windows.

Chiseled Stone Lintel - *Volterra* (Above Window)



HEARTHSTONES

18" x 20" x 2" Will accommodate all colors.



MANTELS



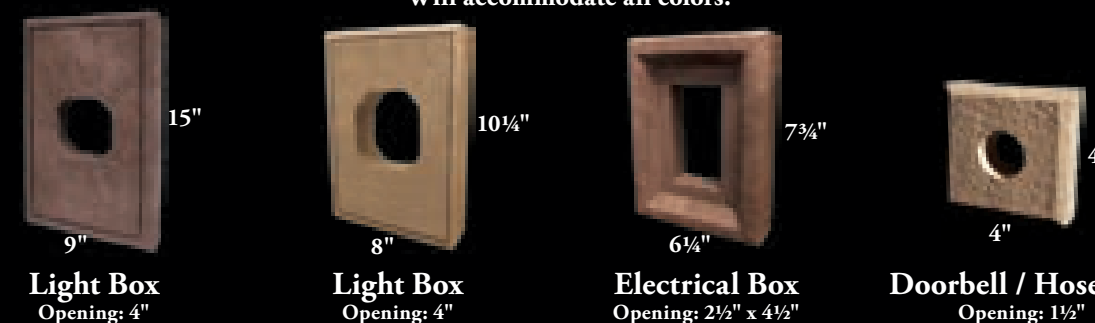
Chiseled Stone Corbel
Carmel Mountain
(Sold Separately)

Chiseled Stone Mantel - *Carmel Mtn.*



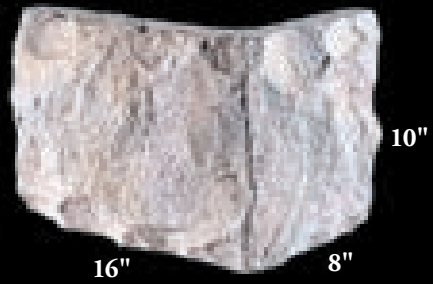
BOXES

Will accommodate all colors.



QUOINS

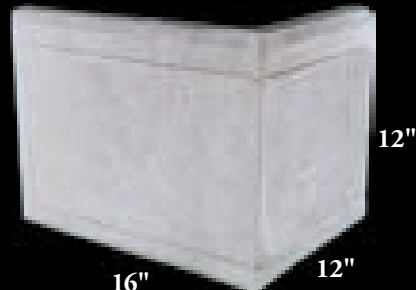
Thickness: 2"



Chiseled Quoin - *Desert Sand*
Model #502
Will accommodate all colors.



Belgian Castle Quoin - *Light Grey*
Model #102
Will accommodate all colors.



Vanderbilt Quoin - #2 Grey
Colors: Model #402
#2 Grey, Off White Texture: Drypack

WALL & POST CAPS



Flagstone Post Cap - *Lompoc*
Post Cap Sizes:
20" x 20", 28" x 28", 30" x 30"



Flagstone Wall Cap - *Light Grey*
Wall Cap Sizes:
9" x 18", 12" x 24", 14" x 24", 18" x 24"



Chiseled Stone Post Cap - *Brownstone*
Post Cap Sizes:
16" x 16", 18" x 18", 20" x 26", 21" x 21"
24" x 24", 28" x 28", 30" x 30", 32" x 32"
36" x 36", 38" x 38", 42" x 42"



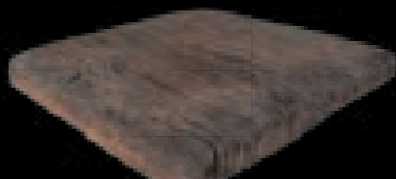
Chiseled Stone Wall Cap - *Aspen*
Wall Cap Sizes:
8" x 24", 10" x 18", 12" x 18"
14" x 18", 16" x 24", 18" x 24"



Snapped Edge Post Cap - *Carmel Mtn.*
Post Cap Sizes:
24" x 24"



Snapped Edge Wall Cap - *Dakota Brown*
Wall Cap Sizes:
12" x 24", 14" x 24"



Barn WoodStone Post Cap - *Cannery Blend*
Post Cap Sizes:
21" x 21"



Barn Woodstone Wall Cap - *Old Frontier*
Wall Cap Sizes:
10" x 36", 12" x 36"



BRICK ACCESSORIES

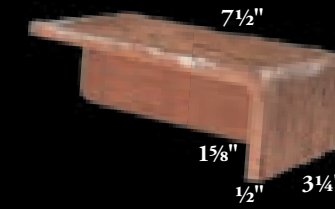
(All inside measurements are nominal. Items do not come grouted.)



**2 1/2" x 8" Corner
*Rustic Blend***



**4" x 8" Corner
*Rustic Blend***



**3-Sided Corner
*Rustic Blend***
Left and Right Corners Available



**Long Return Corner
*Rustic Blend***



**Brick Sill
*Rustic Blend***



**2 1/2" Brick Molding
*Rustic Blend***



**4" Brick Molding
*Antique Red***



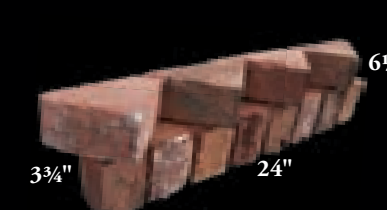
**2 1/2" x 10" Brick Cap
*Tribeca***



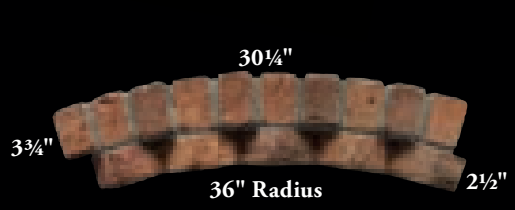
**4" x 8" Brick Cap
*Antique Red***



**Panelized Brick Post Cap
*Rustic Blend***



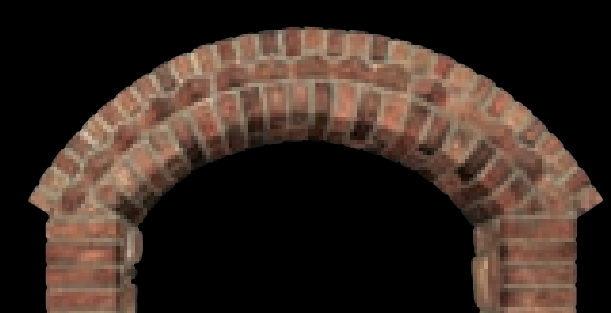
**Sawtooth Brick Trim
*Rustic Blend***



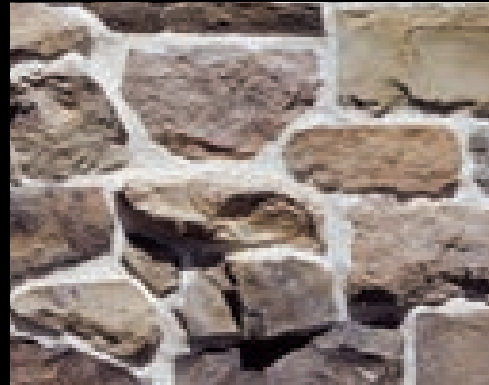
**Panelized Curved Sawtooth
*Tribeca***



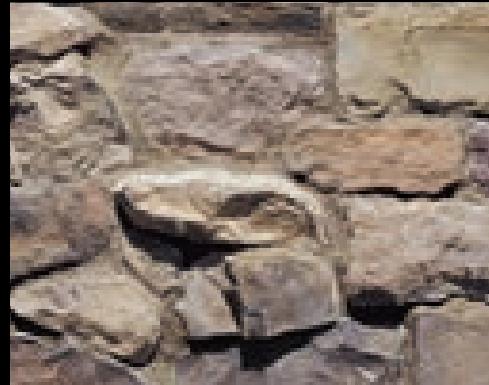
**Custom Sizes Available
For All Brick Accessories**



Panelized Curved Sawtooth Arch - *Tribeca*



3/4" Full Brushed (White Grout)
French Country Villa® - Bordeaux



3/4" Full Brushed (Matching Grout)
French Country Villa® - Bordeaux



1/2" - 3/4" Deep Raked
Mountain Villa® - Rustic Valley



1" - 1 1/2" Full Smooth Tooled
Mountain Villa® - Rustic Valley



Full Brushed - White Grout



Shallow Brushed - Grey Grout



3/4" Full Clean Smooth Brushed
Euro Villa® - Timberlake



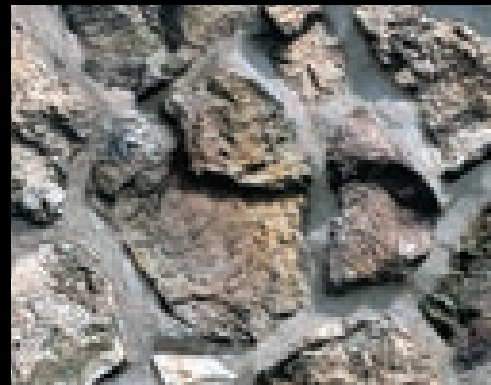
1" Full Rough Brushed
Euro Villa® - Timberlake



3/4" Full Brushed
Tuscan Villa® - Prairie Moss



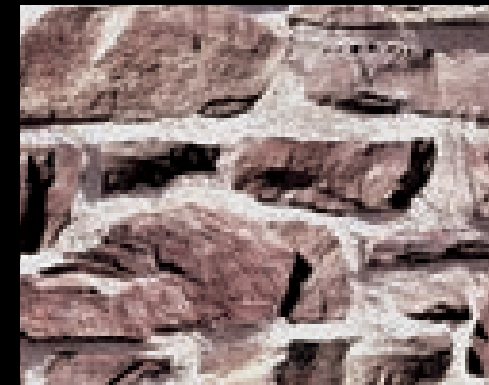
3/4" Shallowed Brushed
Mountain Villa® - Grey Quartzite



1" - 1 1/2" Full Brushed
Mountain Villa® - Grey Quartzite



3/4" Deep Raked (Matching Grout)
Italian Villa® - Portabella



1" Full Brushed (White Grout)
Italian Villa® - Portabella



3/4" Weeping
Tuscan Villa® - Prairie Moss



TECHNICAL DATA

Coronado Stone supports the specification and design process with architectural binders, hatch patterns, tileable textures and a variety of other helpful specification tools, all of which are available in hardcopy or can be downloaded from our website.

12" x 24" Chiseled Limestone - *Silver Ash*
16" x 24" Colosseum Travertine - *Black Forest*
16" x 24" The Getty Stone - *Embassy Blend*
16" x 30" Sand Canyon Flagstone - *Palomar*

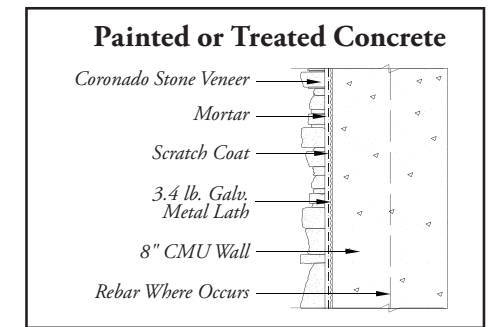
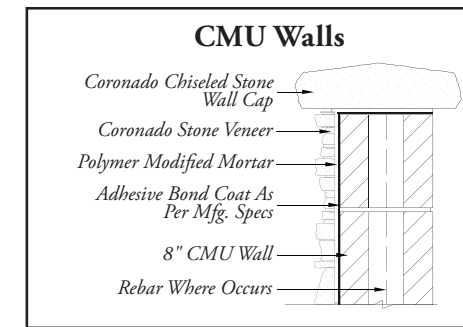
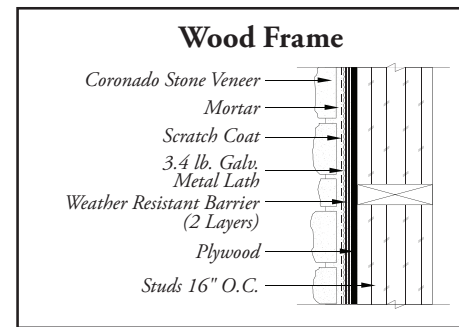
Profile	Height	Length	Thickness	Weight
3" Split Limestone	3"	up to 18"	1" - 1 3/4"	7 - 10 lbs.
6" Split Limestone	6"	up to 30"	1 1/4"	7 - 10 lbs.
8" Classic Jerusalem	8"	8" - 24"	1"	7 - 10 lbs.
Adobe Brick	3 1/2" (±1/8")	15 1/4" (±1/4")	1"	4 - 6 lbs.
Aegean Coral	16"	24"	1"	7 - 10 lbs.
Amalfi Ledge	6"*	24"	1/2" - 1 1/4"	7 - 10 lbs.
Appalachian Fieldstone	7" - 9"	7" - 9"	1 1/2" - 2 1/2"	7 - 10 lbs.
Barn WoodStone	6" and 8"	36"	1"	7 - 10 lbs.
Belgian Brick	2 1/2" (±1/16")	7 3/4" (±1/8")	3/4"	4 - 6 lbs.
Belgian Castle	2" - 12"	up to 16"	1"	7 - 10 lbs.
Canyon Cobble	2" - 10"	4" - 24"	1" - 1 3/4"	7 - 10 lbs.
Canyon Ledge	1" - 7"	up to 20"	1 1/2" - 3"	7 - 10 lbs.
Caribbean Coral	4" - 12"	4" - 16"	1"	7 - 10 lbs.
Carolina Rubble	2" - 10"	4" - 16"	1 1/4" - 2 1/4"	7 - 10 lbs.
Chiseled Limestone	12"	24"	1"	7 - 10 lbs.
Clinker Brick	2 1/2"	4" and 8"	3/4" - 2"	4 - 6 lbs.
Colosseum Travertine	16"	24"	1"	7 - 10 lbs.
Coronado Honey Ledge	2" - 6"*	up to 20"	1" - 2"	7 - 10 lbs.
Coronado Strip Stone	1 1/2" - 2"	up to 23"	1 1/4" to 2"	7 - 10 lbs.
Country Castle	1 1/2" - 7 1/2"	4" - 20"	1 1/2"	7 - 10 lbs.
Country Rubble	2" - 8"	up to 23"	1" - 2 1/2"	7 - 10 lbs.
Creek Rock	3" - 10"	3" - 10"	3/4" - 2 1/2"	7 - 10 lbs.
Desert Ridge	1" - 12"	up to 32"	1" - 2 1/2"	7 - 10 lbs.
Eastern Mountain Ledge*	1" - 5"*	up to 22"	1" - 3"	7 - 10 lbs.
English Rubble	6" - 14"	8" - 32"	1 1/4" - 2"	7 - 10 lbs.
Euro Villa*	4" - 12"	Averaging 8"	1" - 1 1/2"	7 - 10 lbs.
Feathered Stone	2" - 7"	5" - 16"	3/4" - 1"	7 - 10 lbs.
French Country Villa*	2" - 7"	up to 18"	1 1/2" - 2"	7 - 10 lbs.
French Limestone	12"	24"	1"	7 - 10 lbs.
The Getty Stone	16"	24"	1" - 1 3/4"	9 - 12 lbs.
Idaho Drystack	1" - 4"	4" - 16"	1 1/4" - 2"	7 - 10 lbs.
Industrial Ledge	2", 3", 4" & 5"	4" - 30"	3/4" - 2"	7 - 10 lbs.
Italian Villa*	2" - 8"	up to 16"	1 1/2" - 3 1/4"	7 - 10 lbs.
Lennox Stone	4" - 16"	4" - 24"	3/8" - 2"	12 lbs.
Milan Ledge	3" or 6"*	24"	1" - 1 3/4"	7 - 10 lbs.
Minnesota Fieldstone	6" - 12"	6" - 12"	1 1/2" - 2 1/2"	7 - 10 lbs.
Montana Ledge	1" - 4"*	up to 20"	1" - 2 1/2"	7 - 10 lbs.

Profile	Height	Length	Thickness	Weight
Mountain Strip Stone	1 1/2" and 3"	up to 23"	1 1/4" to 2"	7 - 10 lbs.
New England Brick	2 5/8" (±1/16")	9 1/2" (±1/8")	1/2" (±1/16")	4 - 6 lbs.
Old Country Ledge	2" - 7"	4" - 20"	1" - 1 3/4"	7 - 10 lbs.
Old World Ledge	1" - 5"	4" - 16"	1" - 1 1/2"	7 - 10 lbs.
Osage	3" - 12"	4" - 28"	1" - 1 1/2"	7 - 10 lbs.
Pavilion Stone	4" - 12"	4" - 20"	1/2" - 1"	7 - 10 lbs.
Playa Vista Limestone	2 1/2", 5" and 7 3/4"	up to 24"	1" - 1 1/2"	7 - 10 lbs.
Prairie Stone	2" to 5"	4" - 30"	1 1/4"	7 - 10 lbs.
Pro-Ledge*	4"*	up to 20"	1" - 1 1/2"	7 - 10 lbs.
Quick Stack*	2" or 4"*	up to 20"	1" - 2"	7 - 10 lbs.
Refined WoodStone	6"	36"	1"	7 - 10 lbs.
River Rock	2" - 10"	4" - 10"	3/4" - 2 1/2"	7 - 10 lbs.
Rocky Mountain Ledge	1" - 7"	up to 24"	1" - 2 1/2"	7 - 10 lbs.
Roman Brick	2 1/4" (±1/8")	10" (±1/8")	5/8" (±1/16")	4 - 6 lbs.
Rough Cut WoodStone	6"	36"	1"	7 - 10 lbs.
Santa Barbara	4" - 14"	8" - 32"	1 1/4" - 2"	9 - 12 lbs.
Sand Canyon Flagstone	16"	30"	1"	9 - 12 lbs.
Sand Canyon Honed	16"	30"	1"	9 - 12 lbs.
Sculptured Brick	2 1/2" (±1/8")	7 5/8" (±1/4")	3/4" - 1"	4 - 6 lbs.
Sicilian Brick	2 1/2" (±1/8")	7 3/4" (±1/8")	1/2"	4 - 6 lbs.
Sierra Ledge	4"*	up to 20"	1 1/2" - 2"	7 - 10 lbs.
Smooth Limestone	12"	24"	1"	7 - 10 lbs.
Special Used Brick	2 1/2" (±1/8")	7 3/4" (±1/4")	1/2" (±1/16")	4 - 6 lbs.
Split Fieldstone	6" - 20"	6" - 20"	1" - 2"	7 - 10 lbs.
Tumbled Ledge	1" - 4"*	4" - 20"	1 1/2" - 3"	7 - 10 lbs.
Tuscan Villa*	2" - 12"	4" - 16"	1" - 1 3/4"	7 - 10 lbs.
Valley Cobble	2" - 12"	4" - 24"	1" - 1 3/4"	7 - 10 lbs.
Venetian Villa*	2" - 14"	4" - 32"	1" - 2 1/2"	7 - 10 lbs.
Viejo Ranch	2" - 18"	up to 30"	2" - 3"	9 - 12 lbs.
Virginia Ledge	2" or 4"*	up to 20"	1" - 3"	7 - 10 lbs.
The Wave	32"	32"	1/2" - 1 1/2"	5 lbs.
Weathered Brick	2 5/8" (±1/8")	9 7/8" (±1/8")	1/2" (±1/16")	4 - 6 lbs.
Weathered Edge	1" - 7"	up to 32"	1" - 2 1/2"	7 - 10 lbs.
Wirecut Brick (Oversized)	3 5/8" (±1/16")	11 1/2" (±1/8")	1/2" (±1/16")	4 - 6 lbs.
Wirecut Brick (Standard)	2 5/8" (±1/16")	7 7/8" (±1/8")	1/2" (±1/16")	4 - 6 lbs.
Yukon Rubble	1" - 8"	up to 24"	1" - 2 1/2"	7 - 10 lbs.

All sizes and weights are nominal and may vary slightly depending on profile. Weight is based on one square foot of stone. Contact Coronado for further details. * Stone sizes within panels may vary.

Index of Typical Installation Types

View www.Coronado.com for detailed installation instructions



TECHNICAL DATA

Weight: The average packaged weight of Coronado Stone veneer is 8 to 12 lbs. per square foot. Weight varies with thickness.

Non-combustible: Testing on Coronado Stone showed zero flame spread and zero smoke development.

Integral Colors: Coronado's production process results in a product which maintains a natural stone appearance even after many years of exposure to the elements.

Approvals: Coronado Stone has been tested by independent laboratories and has been approved for its intended use by:

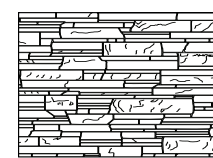
ICC The International Conference of Building Officials. Report ESR-2598

TECHNICAL DOWNLOADS

Visit www.CORONADO.com to download an extensive collection of technical data and specification sheets. Click on the (RESOURCES) link in the top menu bar to view the following items:



Tileable Texture



Hatch Pattern

- Installation Specification Sheets
- Technical Data
- Cross-Section Details
- Hatch Patterns
- Stone Tileable Textures

Coronado Stone is manufactured to meet or exceed specifications for all major code approvals. Independent testing confirms compliance with ICC-ES AC51 for Precast Stone Veneer. Always check your local building codes before installing stone.

Materials:

- Cement ASTM C150
- Sand ASTM C144 or C33
- Aggregate ASTM C33 or C330

Testing:

- Shear Bond Test Tested in accordance with ASTM C482 Greater than 50 psi
- Water Absorption Tested in accordance with section 3.1.4 & 4.6 of ICC-ES AC51
- Freeze / Thaw Tested in accordance with ASTM C67 Less than 3% mass loss
- Unit Weight Shipping weight is less than 15 lbs. per sq. ft. Density is determined in accordance with ASTM C567
- Compressive Strength Tested in accordance with ASTM C39 Greater than 1800 psi
- Tensile Strength Tested in accordance with ASTM C190
- Flexural Strength Tested in accordance with ASTM C348



Coronado Stone Products is dedicated to producing a superior manufactured stone veneer with the least amount of impact to our environment. With a combination of internal recycling techniques, products that increase levels of energy performance and 6 strategically placed facilities throughout the U.S. and Canada, Coronado Stone can help you achieve sustainable solutions for LEED requirements.

LEED Credit Category	LEED Points	Intent	Requirements	Coronado Contribution
EA Credit:1 Energy & Atmosphere: Optimize Energy Performance	2-10	Achieve increasing levels of energy performance above the prerequisite standard to reduce environmental impact associated with excessive energy use.	Demonstrate a percentage improvement in the proposed building performance rating compared to the baseline building performance rating per ASHRAE/IESNA Standard 90.1—2004	Coronado Stone Veneer products can add to the building energy efficiency of exterior walls. Overall efficiency contribution depends on architectural design.
MR Credit:4.1 or 4.2 Materials & Resources: Recycled Content: 10% or Recycled Content: 20%	1-2	Increase demand for building products that incorporate recycled content materials, therefore reducing the impact resulting from extraction and processing of virgin materials.	Use materials with recycled content, such that the sum of post-consumer recycled content plus one-half of the pre-consumer content constitutes at least 20% (based on cost) of the total value of the materials in the project.	Coronado Stone Veneer products can contribute to a project's overall recycled content. Recycled material is used in the production of Coronado's stone veneer which may vary between facilities.
MR Credit:5.1 or 5.2 Materials & Resources: Regional Materials: 10% or Regional Materials: 20%	1-2	Increase demand for building materials and products that are extracted and manufactured within the region, thereby supporting the use of indigenous resources and reducing the environmental impact resulting from transportation.	Use building materials or products that have been extracted, harvested or recovered, as well as manufactured within 500 miles of the project site for a minimum of 20% (based on cost) of the total materials value.	Coronado Stone has 6 strategically placed manufacturing facilities located in the U.S. & Canada which can provide a contribution to this category. (view map on page 116)



Coronado Stone Products is Proud to be a Member of the U.S. Green Building Council.

50 YEAR LIMITED WARRANTY

Coronado Stone Products' wall veneers are protected under this warranty for a period of 50 years from the date purchased, when used on a vertical structure which conforms to local building codes and when installed in accordance with the manufacturer's instructions. Warranty coverage specifically excludes: damage resulting from structure settlement and other types of wall movement, contact with paint or chemicals, discoloration due to contaminants, staining, oxidation and water damage.

This warranty covers only manufacturing defects in Coronado Stone Products' wall veneers and is limited to the replacement or repair of defective materials only and does not cover the cost of removal or installation of defective products. This warranty is limited to the original purchaser and is non-transferable to any subsequent owner.



Santa Barbara - Brookshire (Coursed Pattern)



Tuscan Villa® - Prairie Moss

Weber Design Group www.weberdesigngroup.com	Builder Naples, FL	Cover, 37	Christopher Mayer	Photographer Orange, CA	41-43
Tom Harper www.tomharperphotography.com	Photographer Naples, FL	Cover, 37	Arthur Rutenberg Homes www.arthurrutenberghomes.com	Builder Clearwater, FL	44, 67
Eric Figge Photography www.vancefox.com	Photographer Orange, CA	Back Cover, 91, 103	Rob Harris Productions, Inc. www.rob-harris.com	Photographer Tampa, FL	44, 67
William Lyon Homes www.lyonhomes.com	Builder Newport Beach, CA	Back Cover, 14, 30	Hollister Village Apartments www.hollistervillage.com	Multi-Family Homes Goleta, CA	45
Infinity Home Collection www.infinityhomecollection.com	Builder Denver, CO	7-8, 81	Westar Associates www.westarassociates.com	Developer Costa Mesa, CA	45
Aron Photography www.aronphoto.com	Photographer Encinitas, CA	7-8, 81	Process Design Build, L.L.C. www.processdesignbuild.com	Builder Tucson, AZ	46, 58
Toll Brothers www.tollbrothers.com	Builder CA, AZ, NV	10-11, 41-43, 47, 95, 102, 106, 126-127	Fireplace Stone & Patio www.fireplacestonepatio.com	Distributor Omaha, NE	51
Zephyr www.zephyrpartners.com	Builder Encinitas, CA	13	Sustain Scape www.sustainscapeaz.com	Landscape Designer Scottsdale, AZ	56
Vance Fox Photography www.vancefox.com	Photographer Reno, NV	14, 30	A Better Stone Company Inc. www.azstonevener.com	Mason Phoenix, AZ	57
Applied Photography LLC www.apgs.net	Photographer Orange, CA	17-18, 21-22, 25	Interior Innovations www.interiorinnovations.biz	Remodeler Tucson, AZ	60
Lennar www.lennar.com	Builder Miami, FL	17-18, 24	Veranda Estate Homes www.verandaestatehomes.com	Builder Calgary, AB	65-66
KB Home www.kbhome.com	Builder Los Angeles, CA	21-22, 25	Shea Homes www.sheahomes.com	Builder Gilbert, AZ	78, 91, 97, 103
A.F. Sterling Homes www.afsterling.com	Builder Tucson, AZ	23	Red Rock Contractors www.buildredrock.com	Builder Mesa, AZ	79-80
Wendy Black Rodgers Interior www.wbrint.com	Interior Designer Scottsdale, AZ	31-32	Frontier Homes www.fhcommunities.com	Builder Moreno Valley, CA	82
Castone www.castone.org	Distributor Knoxville, TN	34	EON Design Group www.eondesignco.com	Designer Los Angeles, CA	89-90
Arizona Stone Products, LLC www.arizonastone.com	Distributor Mesa, AZ	35, 39	CalAtlantic Homes www.calatlantichomes.com	Builder Las Vegas, NV	93-94, 105
Calvis Wyant Luxury Homes www.calviswyant.com	Builder Scottsdale, AZ	35	Stone Creek Furniture www.stonecreekfurniture.com	Remodeler Scottsdale, AZ	95
Gina Spiller www.ginaspillerdesign.com	Designer Monterey, CA	35	Cole Thomas Homes www.coletomashomes.com	Builder El Paso, TX	96
Mark Boisclair Photography, Inc. www.markboisclair.com	Photographer Phoenix, AZ	35	Faulkner Studios www.faulknerstudios.com	Photographer New Brunswick, NJ	96
Timber Ridge Properties www.timberidgeproperties.net	Builder Denver, CO	36, 63, 68, 71	Meritage Homes www.meritagehomes.com	Builder Phoenix, AZ	98
Interior Expressions www.interiorexpressionsaz.com	Interior Designer Tucson, AZ	38	Pardee Homes www.pardeehomes.com	Builder Bonsall, CA	104

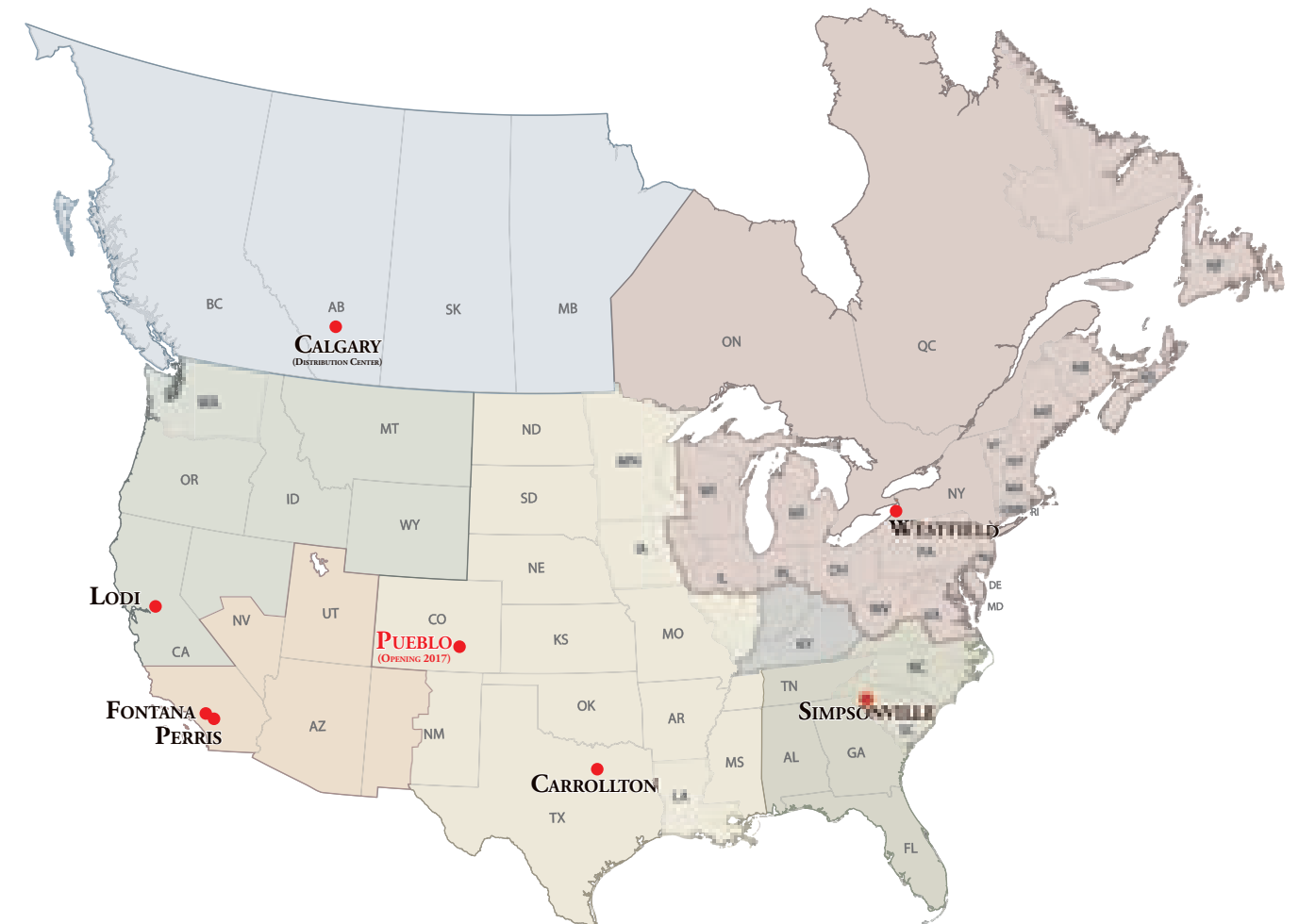
In 1960, there was only one stone manufactured in California. It was a 2½' x 4' sheet of concrete which was broken up into random shapes at the job site. Mel Bacon saw the need for something better and started making his own stone. He soon developed the first random shaped stones from individual molds which led to the development of many of today's popular varieties of ledge stones and ashlar patterns.

As a mason, Mel experienced the difficulty of installing stone that was not created with the installer in mind. It was heavy and the shapes and sizes were difficult to piece together. He realized that through proper pattern and mold design, ease of installation could be achieved. From that moment, ease of installation became the benchmark for every pattern of stone Mel created. Easy installation is not only a time saver, it's a project saver.

The pride we take in the creation of our product shows in the quality experience you will enjoy as one of our valued customers. Give Coronado the opportunity to make you a believer. Our mission is your satisfaction!

OVER 50 YEARS OF MANUFACTURING EXCELLENCE

Coronado manufactures and distributes its high quality stone at six factories conveniently located across North America



Northwest Region serviced by the Lodi Manufacturing Facility
(209) 334-1380

Southwest Region serviced by the Fontana Manufacturing Facility
(800) 847-8663

Western Canada Region serviced by the Calgary Distribution Center
(403) 203-0881

Central Region serviced by the Carrollton Manufacturing Facility
(888) 567-2833

Northeast Region serviced by the Westfield Manufacturing Facility
(716) 326-4602

Southeast Region serviced by the Simpsonville Manufacturing Facility
(864) 962-1221



Tuscan Villa - Florentine

Five Dollars



CORONADO[®]

The Leader in Manufactured Stone, Brick and Tile Products

STONEYARD[®]

265 Foster Street
Littleton, MA 01460

978.742.9800
sales@stoneyard.com

Due to photographic and printing variations, brochure colors may not be accurate. All sizes are nominal.
We suggest examination of Coronado product samples prior to purchase.